

Packaging Order

Recommendation VDA 4946 Part 2

Version 3.0, März 2022



Short Description

This recommendation describes the use of UN/Edifact message ORDERS for order data in the packaging supply chain of the automotive industry. It is identical to Odette recommendation OM31.

Disclaimer

The VDA Recommendations are recommendations that may be freely adopted by anyone. Users are responsible for correct implementation of the recommendations as required on a case-by-case basis.

The recommendations take into account the prevailing technology at the time of publication. Use of the VDA Recommendations does not absolve anyone from responsibility for his/her own actions, and all users act at their own risk. Liability of VDA and those involved in drafting of VDA Recommendations is excluded.

If you notice any errors, omissions or ambiguities in these recommendations, please contact VDA without delay so that these errors can be rectified.

Publisher	Verband der Automobilindustrie e.V. (VDA) Behrenstrasse 35, 10117 Berlin www.vda.de
	This recommendation was developed by AK SID together with an Odette project group.
Copyright	Verband der Automobilindustrie e.V. (VDA) Reprint, also in extracts, is only permitted, if the source is stated
Version	Version 3.0, März 2022

Table of contents

Table of contents.....	3
List of changes	4
Structure of an UN/EDIFACT interchange	6
Branching diagram	7
Message structure.....	12
Segment details	14
Applicable codes.....	63

List of changes

No.	Change Change Request	Date	Version	Segment(-group) and data element		
01	2021-018 Anpassung an S3 konformen Profil der EDIFACT S4 (ISO 9735 Part 11). / Adaptation to S3 compliant profile of EDIFACT S4 (ISO 9735 Part 11).	2022-01-20	3.0	40	UNZ	Interchange trailer
02	2021-018 Anpassung an S3 konformen Profil der EDIFACT S4 (ISO 9735 Part 11). / Adaptation to S3 compliant profile of EDIFACT S4 (ISO 9735 Part 11).	2022-01-20	3.0	39	UNT	Message trailer
03	2021-018 GAVR21 --> GAVR30	2022-01-20	3.0	03	UNH	S009 0057 Message header
04	2021-018 Anpassung an S3 konformen Profil der EDIFACT S4 (ISO 9735 Part 11). / Adaptation to S3 compliant profile of EDIFACT S4 (ISO 9735 Part 11).	2022-01-20	3.0	03	UNH	Message header
05	2021-018 Anpassung an S3 konformen Profil der EDIFACT S4 (ISO 9735 Part 11). / Adaptation to S3 compliant profile of EDIFACT S4 (ISO 9735 Part 11).	2022-01-20	3.0	02	UNB	Interchange header
06	2021-018 Anpassung an S3 konformen Profil der EDIFACT S4 (ISO 9735 Part 11). / Adaptation to S3 compliant profile of EDIFACT S4 (ISO 9735 Part 11).	2022-01-20	3.0	01	UNA	Service string advice
07	2021-018 Anpassung an S3 konformen Profil der EDIFACT S4 (ISO 9735 Part 11). / Adaptation to S3 compliant profile of EDIFACT S4 (ISO 9735 Part 11).	2022-01-20	3.0			
08	2021-008 Neue / new SG: Subset ID	2021-07-07	3.0	08	SG1	RFF SG1#2 Subset ID Subset ID
09	2019-033 Remark changed.	2019-12-31	2.1	20	SG2	LOC SG2#4 Empty packaging receiving party (ship to's plant) Place of discharge / unloading point
10	2019-033 Remark changed.	2019-12-31	2.1	20	SG2	LOC C519 3223 SG2#4 Empty packaging receiving party (ship to's plant) Place of discharge / unloading point
11	2019-033 O91 --> O92	2019-12-31	2.1	20	SG2	LOC C517 3055 SG2#4 Empty packaging receiving party (ship to's plant) Place of discharge / unloading point

List of changes

No.	Change Change Request	Date	Version	Segment(-group) and data element
12	2019-033 Remark changed.	2019-12-31	2.1	16 SG2 LOC C519 3223 SG2#3 Empty Packaging Despatch Party (Ship from's plant) Shipping location/ Place of loading
13	2019-033 Remark changed.	2019-12-31	2.1	16 SG2 LOC SG2#3 Empty Packaging Despatch Party (Ship from's plant) Shipping location/ Place of loading
14	2019-033 Remark changed.	2019-12-31	2.1	12 SG2 NAD SG2#2 Message Recipient Message Recipient - name and address
15	2019-033 Remark changed.	2019-12-31	2.1	09 SG2 NAD SG2#1 Message Sender Message Sender - name and address
16	2019-033 Status D --> O	2019-12-31	2.1	SG1 Reference to Packaging Order Proposal
17	2019-033 Remark changed: If a message needs to be corrected, it must first be cancelled and then sent again in the new (corrected) from. --> If a message needs to be corrected or cancelled, use the VDA 4946 Part 4 - Packaging Order Response - ORDCHG. Falls eine Nachricht korrigiert werden muss, soll sie zunächst komplett storniert werden und dann neu (korrigiert) gesendet werden. --> Wenn eine Bestellung korrigiert oder storniert werden muss, verwenden Sie dafür die VDA 4946 Teil 3 - Packmittelbestelländerung - ORDCHG.	2019-12-31	2.1	04 BGM 1225 Beginning of message
18	2019-033 Format an..70 --> an..35	2019-12-31	2.1	04 BGM C106 1004 Beginning of message
19	2019-033 GBOB10 --> GAVR21	2019-12-31	2.1	03 UNH S009 0057 Message header
20	Komplett überarbeitete Ausgabe / completely revised release	2018-04-17	2.0	

Structure of an UN/EDIFACT interchange

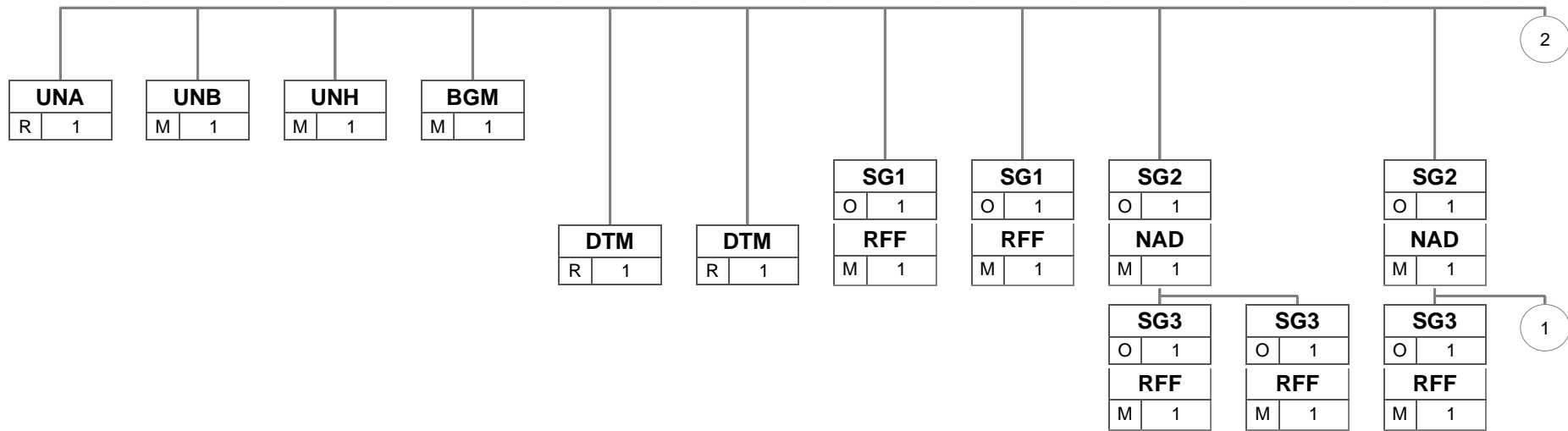
An EDIFACT interchange file contains an interchange frame (UNB-UNZ) with one or more messages (UNH-UNT). The interchange frame can be preceded by a service string advice to define the used separator characters (recommended).

Usually one interchange file contains only messages of the same type, ORDERS
e.g.

For more information, please refer to recommendation VDA 4900.

Status	Segment	Description
Optional	UNA	Service String Advice
Mandatory	UNB	Interchange header
Mandatory	UNH	1. Message header
	...	Message segments
Mandatory	UNT	1. Message trailer
	UNH	2. Message header
	...	Message segments
	UNT	2. Message trailer
	etc.	
	UNH	n. Message header
	...	Message segments
	UNT	n. Message trailer
Mandatory	UNZ	Interchange trailer

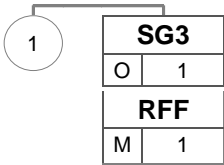
Branchingdiagramm



Die schwarzen Segmente/Gruppen werden genutzt, die grauen Segmente/Gruppen sind im Nachrichtentyp enthalten, werden aber nicht genutzt.

Bez	Bez = Segment-/Gruppen-Bezeichner, MaxWdh = Maximale Wiederholung der Segmente/Gruppen
St MaxWdh	St = Status (M=Muss/Mandatory, C=Conditional, R=Erforderlich/Required, O=Optional, D=Abhängig von/Dependent, A=Empfohlen/Advised)

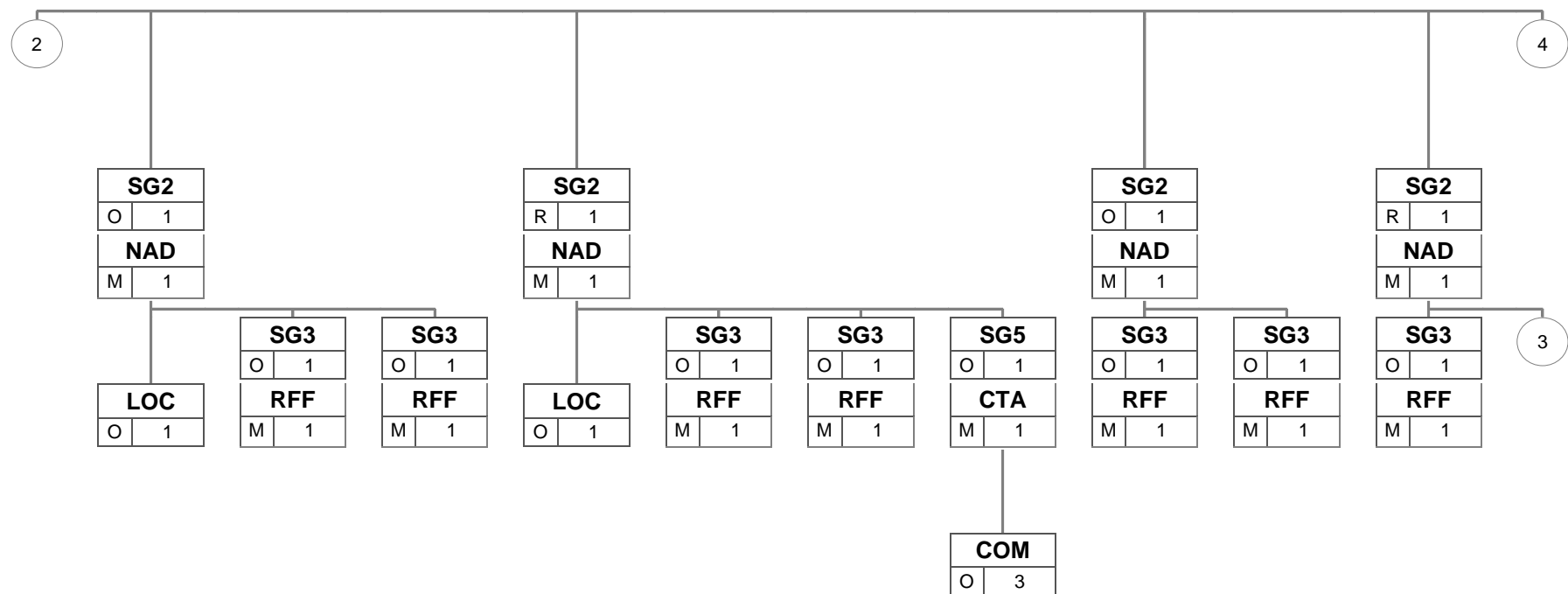
Branchingdiagramm



Die schwarzen Segmente/Gruppen werden genutzt, die grauen Segmente/Gruppen sind im Nachrichtentyp enthalten, werden aber nicht genutzt.

Bez	Bez = Segment-/Gruppen-Bezeichner, MaxWdh = Maximale Wiederholung der Segmente/Gruppen
St MaxWdh	St = Status (M=Muss/Mandatory, C=Conditional, R=Erforderlich/Required, O=Optional, D=Abhängig von/Dependent, A=Empfohlen/Advised)

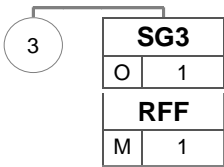
Branchingdiagramm



Die schwarzen Segmente/Gruppen werden genutzt, die grauen Segmente/Gruppen sind im Nachrichtentyp enthalten, werden aber nicht genutzt.

Bez	Bez = Segment-/Gruppen-Bezeichner, MaxWdh = Maximale Wiederholung der Segmente/Gruppen
St MaxWdh	St = Status (M=Muss/Mandatory, C=Conditional, R=Erforderlich/Required, O=Optional, D=Abhängig von/Dependent, A=Empfohlen/Advised)

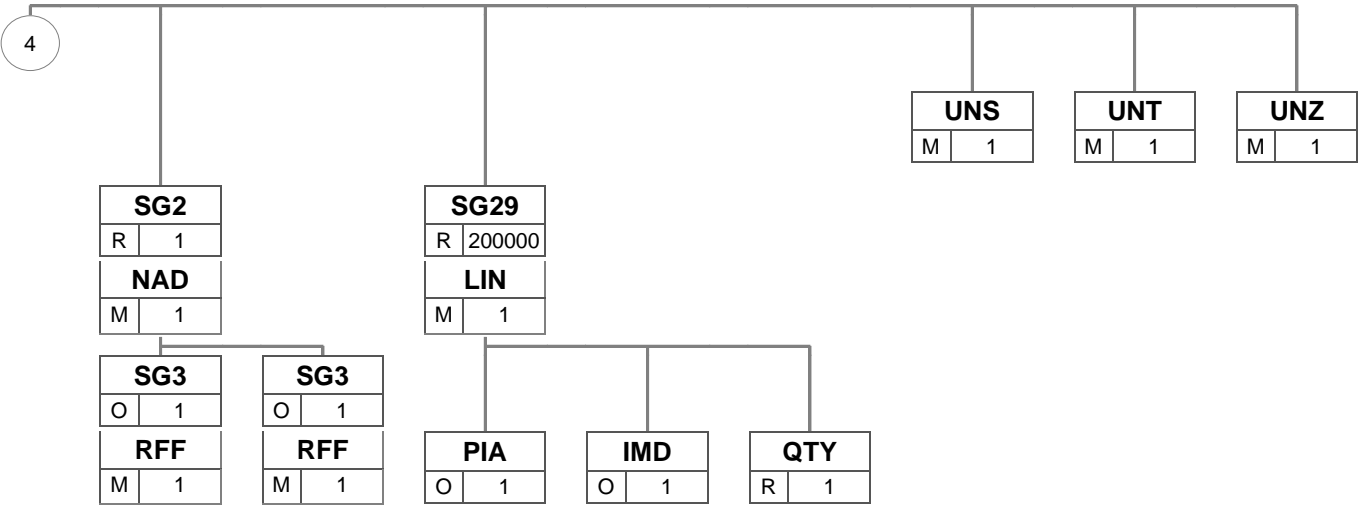
Branchingdiagramm



Die schwarzen Segmente/Gruppen werden genutzt, die grauen Segmente/Gruppen sind im Nachrichtentyp enthalten, werden aber nicht genutzt.

Bez	Bez = Segment-/Gruppen-Bezeichner, MaxWdh = Maximale Wiederholung der Segmente/Gruppen
St MaxWdh	St = Status (M=Muss/Mandatory, C=Conditional, R=Erforderlich/Required, O=Optional, D=Abhängig von/Dependent, A=Empfohlen/Advised)

Branchingdiagramm



Die schwarzen Segmente/Gruppen werden genutzt, die grauen Segmente/Gruppen sind im Nachrichtentyp enthalten, werden aber nicht genutzt.

Bez	Bez = Segment-/Gruppen-Bezeichner, MaxWdh = Maximale Wiederholung der Segmente/Gruppen
St MaxWdh	St = Status (M=Muss/Mandatory, C=Conditional, R=Erforderlich/Required, O=Optional, D=Abhängig von/Dependent, A=Empfohlen/Advised)

Structure / content

No.	Tag	St	MaxRep	Content
1	UNA	R	1	Service string advice
2	UNB	M	1	Interchange header
3	UNH	M	1	Message header
4	BGM	M	1	Beginning of message
5	DTM	R	1	Order date
6	DTM	R	1	Requested delivery date
7	SG1	O	1	Reference to Packaging Order Proposal
	RFF	M	1	Reference to Packaging Order Proposal
8	SG1	O	1	Subset ID
	RFF	M	1	Subset ID
9	SG2	O	1	Message Sender
	NAD	M	1	Message Sender - name and address
	SG3	O	1	Additional Party ID (DUNS)
	RFF	M	1	Reference
10	SG3	O	1	Account number
	RFF	M	1	Account number
11	SG2	O	1	Message Recipient
	NAD	M	1	Message Recipient - name and address
	SG3	O	1	Additional Party ID (DUNS)
	RFF	M	1	Reference
12	SG3	O	1	Account number
	RFF	M	1	Account number
13	SG2	O	1	Empty Packaging Despatch Party (Ship from's plant)
	NAD	M	1	Empty Equipment Despatch Party - name and address
	LOC	O	1	Shipping location/ Place of loading
	SG3	O	1	Additional Party ID (DUNS)
14	RFF	M	1	Reference
	SG3	O	1	Account number
15	RFF	M	1	Account number
	SG3	O	1	Account number
16	SG2	R	1	Empty packaging receiving party (ship to's plant)
	NAD	M	1	Empty equipment receiving party (Ship to's plant)
	LOC	O	1	Place of discharge / unloading point
	SG3	O	1	Additional Party ID (DUNS)
17	RFF	M	1	Reference
	SG3	O	1	Account number
18	RFF	M	1	Account number
	SG3	O	1	Account number
19	SG5	O	1	Information contact
	CTA	M	1	Information contact
	COM	O	3	Communication contact
	SG2	O	1	Packaging Manager Party
20	NAD	M	1	Packaging Manager Party
	SG3	O	1	Additional Party ID (DUNS)
21	RFF	M	1	Reference
	SG3	O	1	Account number
22	RFF	M	1	Account number
	SG3	O	1	Account number
23	SG2	R	1	Buyer of the packaging service
	NAD	M	1	Buyer's name and address
	SG3	O	1	Additional Party ID (DUNS)
	SG3	O	1	Additional Party ID (DUNS)

Tag = Tag; No. = consecutive segment number in the guide; MaxRep = maximum repetition; St = status (M=mandatory, C=conditional, R=required, O=optional, D=dependent, A=advised)

Structure / content

No.	Tag	St	MaxRep	Content
29	RFF	M	1	Reference
	SG3	O	1	Account number
30	RFF	M	1	Account number
	SG2	R	1	Seller / Supplier of the packaging service
31	NAD	M	1	Seller / Supplier of the packaging service
	SG3	O	1	Additional Party ID (DUNS)
32	RFF	M	1	Reference
	SG3	O	1	Account number
33	RFF	M	1	Account number
	SG29	R	200000	Package identification and ordered quantity
34	LIN	M	1	Packaging code of supplier of empties
35	PIA	O	1	Additional package type code
36	IMD	O	1	Package folded Indicator
37	QTY	R	1	Ordered quantity
38	UNS	M	1	Section control
39	UNT	M	1	Message trailer
40	UNZ	M	1	Interchange trailer

Tag = Tag; No. = consecutive segment number in the guide; MaxRep = maximum repetition; St = status (M=mandatory, C=conditional, R=required, O=optional, D=dependent, A=advised)

Segmente

Nr	Bez	St	MaxWdh	Name
1	UNA	R	1	Service string advice

Standard		Implementierung			
Bez	Name	St	Format	St	Format Anwendung / Bemerkung
UNA1	Component data element separator	M	an1	M	an1 Colon
UNA2	Data element separator	M	an1	M	an1 Plus sign
UNA3	Decimal notation	M	an1	M	an1 Decimal point or comma This differs from version 4 that only allows decimal point.
UNA4	Release indicator	M	an1	M	an1 Question mark
UNA5	Reserved for future use	M	an1	M	an1 Blank
UNA6	Segment terminator	M	an1	M	an1 Apostrophe

The use of UNA is strongly recommended and UNA5 must be blank.

Beispiel:

UNA: + . ? ' '

Bez =Bezeichner; Nr = Laufende Segmentnummer im Guide; MaxWdh = Maximale Wiederholung; St = Status (M=Muss/Mandatory, C=Conditional, R=Erforderlich/Required, O=Optional, D=Abhängig von/Dependent, A=Empfohlen/Advised)

Segmente

Nr	Bez	St	MaxWdh	Name
2	UNB	M	1	Interchange header

Standard		Implementierung		
Bez	Name	St	Format	Anwendung / Bemerkung
S001	Syntax identifier	M		M
0001	Syntax identifier	M	a4	M a4 UNOW shall only be used, if agreed upon by partners in their interchange agreement. UNOA UN/ECE level A UNOB UN/ECE level B UNOC UN/ECE level C UNOD UN/ECE level D UNOW UN/ECE level W
0002	Syntax version number	M	an1	M an1 To use syntax version 4 according to the ISO 9735-11 profile, code "X" must be used here. X Syntax version 4 ISO 9735-11 profile.
0080	Service code list directory version number	C	an..6	N Nicht genutzt
0133	Character encoding, coded	C	an..3	N Nicht genutzt
0076	Syntax release number	C	an2	N Nicht genutzt
S002	Interchange sender	M		M
0004	Sender identification	M	an..35	M an..35 Unique ID of the sender in the data transmission network or system used.
0007	Partner identification code qualifier	C	an..4	O an..4 Qualifier for the organisation that assigned the identifier, e.g. 59 for Odette.
0008	Address for reverse routing	C	an..14	O an..14 Address for reverse routing Address of an application or internal system at sender's site to which reply messages should be routed.
0042	Interchange sender internal sub-identification	C	an..35	N Nicht genutzt
S003	Interchange recipient	M		M
0010	Recipient identification	M	an..35	M an..35 Unique ID of the recipient in the data transmission network or system used.
0007	Partner identification code qualifier	C	an..4	O an..4
0014	Routing address	C	an..14	O an..14 Address for reverse routing Address of an application or an internal system at the recipient: For some buyers, the delivery schedules or similar can be generated from different ERP systems. After receipt by the buyer, the messages must then be forwarded to this system and processed there.
0046	Interchange recipient internal sub-identification	C	an..35	N Nicht genutzt
S004	Date/time of preparation	M		M
0017	Date of preparation	M	n8	M n8 Attention: Difference to S3, 8 digits (including century)! Format CCYYMMDD
0019	Time of preparation	M	n4	M n4 Format hhmm
0020	Interchange control reference	M	an..14	M an..14 Unique ID of a data transmission.
S005	Recipient's reference, password	C		N Nicht genutzt
0022	Recipient's reference/password	M	an..14	N Nicht genutzt
0025	Recipient's reference/password qualifier	C	an2	N Nicht genutzt
0026	Application reference	C	an..14	N Nicht genutzt
0029	Processing priority code	C	a1	N Nicht genutzt
0031	Acknowledgement request	C	n1	N Nicht genutzt
0032	Communications agreement ID	C	an..35	N Nicht genutzt

Bez =Bezeichner; Nr = Laufende Segmentnummer im Guide; MaxWdh = Maximale Wiederholung; St = Status (M=Muss/Mandatory, C=Conditional, R=Erforderlich/Required, O=Optional, D=Abhängig von/Dependent, A=Empfohlen/Advised)

Segmente

Standard		Implementierung		
Bez	Name	St	Format	Anwendung / Bemerkung
0035	Test indicator	C	n1	O n1 Only used if the data exchange is for test purposes. This data element is not transmitted for valid transmissions. 1 Interchange is a test

The structure of the EDIFACT interchange and the specification of the service segments for electronic data exchange used in the automotive industry are described in detail in the VDA Recommendation 4900.

Due to the change in ISO standard 9735, VDA-EDIFACT recommendations will be based on the EDIFACT Syntax 3 compliant profile of EDIFACT Syntax 4 (ISO 9735 Part 11) from 2021-12. The service segments (UNA, UNB, UNH, UNS, UNT, UNZ) were adapted accordingly. The user data segments were not changed.

Beispiel:

**UNB+UNOC:X+VA13:59:EDI-Outbound+XB05:59:EDI-Inbound+20220721:0719+20220000
25++++++1'**

Bez =Bezeichner; Nr = Laufende Segmentnummer im Guide; MaxWdh = Maximale Wiederholung; St = Status (M=Muss/Mandatory, C=Conditional, R=Erforderlich/Required, O=Optional, D=Abhängig von/Dependent, A=Empfohlen/Advised)

Segmente

Nr	Bez	St	MaxWdh	Name
3	UNH	M	1	Message header

Standard		Implementierung		
Bez	Name	St	Format	Anwendung / Bemerkung
0062	Message reference number	M	an..14	M an..14 Message reference number (in the interchange)
S009	Message identifier	M		M
0065	Message type	M	an..6	M an..6 ORDERS Purchase order message
0052	Message version number	M	an..3	M an..3 D Draft version/UN/EDIFACT Directory
0054	Message release number	M	an..3	M an..3 16A Release 2016 - A
0051	Controlling agency	M	an..2	M an..2 UN UN/CEFACT
0057	Association assigned code	C	an..6	R an..6 Identification of the subset release, assigned by VDA. GAVR30 VDA Packaging Order V3.0 JAI016
0110	Code list directory version number	C	an..6	N Nicht genutzt
0113	Message type sub-function identification	C	an..6	N Nicht genutzt
0068	Common access reference	C	an..35	N Nicht genutzt
S010	Status of the transfer	C		N Nicht genutzt
0070	Sequence of transfers	M	n..2	N Nicht genutzt
0073	First and last transfer	C	a1	N Nicht genutzt
S016	Message subset identification	C		N Nicht genutzt
0115	Message subset identification	M	an..14	N Nicht genutzt
0116	Message subset version number	C	an..3	N Nicht genutzt
0118	Message subset release number	C	an..3	N Nicht genutzt
0051	Controlling agency	C	an..2	N Nicht genutzt
S017	Message implementation guideline identification	C		N Nicht genutzt
0121	Message implementation guideline identification	M	an..14	N Nicht genutzt
0122	Message implementation guideline version number	C	an..3	N Nicht genutzt
0124	Message implementation guideline release number	C	an..3	N Nicht genutzt
0051	Controlling agency	C	an..2	N Nicht genutzt
S018	Scenario identification	C		N Nicht genutzt
0127	Scenario identification	M	an..14	N Nicht genutzt
0128	Scenario version number	C	an..3	N Nicht genutzt
0130	Scenario release number	C	an..3	N Nicht genutzt
0051	Controlling agency	C	an..2	N Nicht genutzt

Beispiel:

UNH+12345+ORDERS : D : 16A : UN : GAVR30 '

Bez =Bezeichner; Nr = Laufende Segmentnummer im Guide; MaxWdh = Maximale Wiederholung; St = Status (M=Muss/Mandatory, C=Conditional, R=Erforderlich/Required, O=Optional, D=Abhängig von/Dependent, A=Empfohlen/Advised)

Segmente

Nr	Bez	St	MaxWdh	Name
4	BGM	M	1	Beginning of message

Standard		Implementierung		
Bez	Name	St	Format	Anwendung / Bemerkung
C002	Document/message name	C		R
1001	Document name code	C	an..3	R an..3 X03 Packaging Order ODDC001(1)
1131	Code list identification code	C	an..17	N Nicht genutzt
3055	Code list responsible agency code	C	an..3	R an..3 Code specifying the agency responsible for a code list. 10 ODETTE
1000	Document name	C	an..35	O an..35 Additional profile information Can be used to specify a company-specific profile of this application description.
C106	Document/message identification	C		R
1004	Document identifier	C	an..70	R an..35 Order number Unique identifier of the document assigned by buyer (NAD+BY). No duplicates during a calendar year.
1056	Version identifier	C	an..9	N Nicht genutzt
1060	Revision identifier	C	an..6	N Nicht genutzt
1225	Message function code	C	an..3	R an..3 If a message needs to be corrected or cancelled, use the VDA 4946 Part 3 - Packaging Order Change - ORDCHG. 9 Original
4343	Response type code	C	an..3	N Nicht genutzt
1373	Document status code	C	an..3	N Nicht genutzt
3453	Language name code	C	an..3	N Nicht genutzt

Beispiel:

BGM+X03::10:(2) Packaging Order+Document number+9'

Bez =Bezeichner; Nr = Laufende Segmentnummer im Guide; MaxWdh = Maximale Wiederholung; St = Status (M=Muss/Mandatory, C=Conditional, R=Erforderlich/Required, O=Optional, D=Abhängig von/Dependent, A=Empfohlen/Advised)

Segmente

Nr	Bez	St	MaxWdh	Name
5	DTM	R	1	Order date

Standard			Implementierung		
Bez	Name	St	Format	St	Format Anwendung / Bemerkung
C507	Date/time/period	M		M	
2005	Date or time or period function code qualifier	M	an..3	M	an..3 137 Document issue date time
2380	Date or time or period text	C	an..35	R	n..12 Date/time of creation of message
2379	Date or time or period format code	C	an..3	R	an..3 102 CCYYMMDD 203 CCYYMMDDHHMM

Beispiel:

DTM+137:20131201:102'

Bez =Bezeichner; Nr = Laufende Segmentnummer im Guide; MaxWdh = Maximale Wiederholung; St = Status (M=Muss/Mandatory, C=Conditional, R=Erforderlich/Required, O=Optional, D=Abhängig von/Dependent, A=Empfohlen/Advised)

Segmente

Nr	Bez	St	MaxWdh	Name
6	DTM	R	1	Requested delivery date

Standard		Implementierung			
Bez	Name	St	Format	St	Format Anwendung / Bemerkung
C507	Date/time/period	M		M	
2005	Date or time or period function code qualifier	M	an..3	M	an..3
					2 Delivery date/time, requested
2380	Date or time or period text	C	an..35	R	an..24 Requested delivery date Buyer's requested arrival date of delivery.
2379	Date or time or period format code	C	an..3	R	an..3 The use of time / time window depends on the concrete contract between the customer, supplier and transport service provider 102 CCYYMMDD 203 CCYYMMDDHHMM 205 CCYYMMDDHHMMZHHMM 719 CCYYMMDDHHMM-CCYYMMDDHHMM

Beispiel:

DTM+2:20131201:102'

Bez =Bezeichner; Nr = Laufende Segmentnummer im Guide; MaxWdh = Maximale Wiederholung; St = Status (M=Muss/Mandatory, C=Conditional, R=Erforderlich/Required, O=Optional, D=Abhängig von/Dependent, A=Empfohlen/Advised)

Segmente

Nr	Bez	St	MaxWdh	Name
	SG1	O	1	Reference to Packaging Order Proposal
7	RFF	M	1	Reference to Packaging Order Proposal

Standard		Implementierung			
Bez	Name	St	Format	St	Format Anwendung / Bemerkung
C506	Reference	M		M	
1153	Reference code qualifier	M	an..3	M	an..3 X01 Packaging order proposal reference ODDC001(C)
1154	Reference identifier	C	an..70	R	an..35 Reference to Packaging Order Proposal Must indicate if a packing order proposal has been sent in advance.
1156	Document line identifier	C	an..6	N	Nicht genutzt
1056	Version identifier	C	an..9	N	Nicht genutzt
1060	Revision identifier	C	an..6	N	Nicht genutzt

Beispiel:

RFF+X01:123ABC'

Bez =Bezeichner; Nr = Laufende Segmentnummer im Guide; MaxWdh = Maximale Wiederholung; St = Status (M=Muss/Mandatory, C=Conditional, R=Erforderlich/Required, O=Optional, D=Abhängig von/Dependent, A=Empfohlen/Advised)

Segmente

Nr	Bez	St	MaxWdh	Name
	SG1	O	1	Subset ID
8	RFF	M	1	Subset ID

Standard		Implementierung			
Bez	Name	St	Format	St	Format Anwendung / Bemerkung
C506	Reference	M		M	
1153	Reference code qualifier	M	an..3	M	an..3
					AOZ Implementation version number
1154	Reference identifier	C	an..70	R	an..70 Reference to the (usually customer's) subset ID/guideline version, this message is conformant to.
1156	Document line identifier	C	an..6	N	Nicht genutzt
1056	Version identifier	C	an..9	N	Nicht genutzt
1060	Revision identifier	C	an..6	N	Nicht genutzt

Beispiel:

RFF+AOZ:Version3.2'

Bez =Bezeichner; Nr = Laufende Segmentnummer im Guide; MaxWdh = Maximale Wiederholung; St = Status (M=Muss/Mandatory, C=Conditional, R=Erforderlich/Required, O=Optional, D=Abhängig von/Dependent, A=Empfohlen/Advised)

Segmente

Nr	Bez	St	MaxWdh	Name
	SG2	O	1	Message Sender
9	NAD	M	1	Message Sender - name and address

Standard		Implementierung			
Bez	Name	St	Format	St	Format Anwendung / Bemerkung
3035	Party function code qualifier	M	an..3	M	an..3 MS Document/message issuer/sender
C082	Party identification details	C		R	
3039	Party identifier	M	an..35	M	an..35
1131	Code list identification code	C	an..17	N	Nicht genutzt
3055	Code list responsible agency code	C	an..3	R	an..3 10 ODETTE 16 US, D&B (Dun & Bradstreet Corporation) 5 ISO (International Organization for Standardization) 3055 O91 Assigned by the provider of the empty packaging O92 Assigned by the receiver of the empty packaging
C058	Name and address	C		N	Nicht genutzt
3124	Name and address description	M	an..35	N	Nicht genutzt
3124	Name and address description	C	an..35	N	Nicht genutzt
3124	Name and address description	C	an..35	N	Nicht genutzt
3124	Name and address description	C	an..35	N	Nicht genutzt
3124	Name and address description	C	an..35	N	Nicht genutzt
C080	Party name	C		O	
3036	Party name	M	an..70	M	an..35 Single text line for specification of a name
3036	Party name	C	an..70	O	an..35 see 3036 # 1
3036	Party name	C	an..70	N	Nicht genutzt
3036	Party name	C	an..70	N	Nicht genutzt
3036	Party name	C	an..70	N	Nicht genutzt
3045	Party name format code	C	an..3	N	Nicht genutzt
C059	Street	C		O	
3042	Street and number or post office box identifier	M	an..35	M	an..35 Part of address identifying the location of a building, normally given together with street
3042	Street and number or post office box identifier	C	an..35	O	an..35 see 3042 # 1
3042	Street and number or post office box identifier	C	an..35	N	Nicht genutzt
3042	Street and number or post office box identifier	C	an..35	N	Nicht genutzt
3164	City name	C	an..35	O	an..35 The name of the city, town, or village of this address.
C819	Country subdivision details	C		O	
3229	Country subdivision identifier	C	an..9	R	an..9 State or region within a country. The use of UN LoCodes is recommended.
1131	Code list identification code	C	an..17	N	Nicht genutzt
3055	Code list responsible agency code	C	an..3	N	Nicht genutzt
3228	Country subdivision name	C	an..70	N	Nicht genutzt
3251	Postal identification code	C	an..17	O	an..17 Identifier of one or more address data properties according

Bez =Bezeichner; Nr = Laufende Segmentnummer im Guide; MaxWdh = Maximale Wiederholung; St = Status (M=Muss/Mandatory, C=Conditional, R=Erforderlich/Required, O=Optional, D=Abhängig von/Dependent, A=Empfohlen/Advised)

Segmente

Standard		Implementierung		
Bez	Name	St	Format	Anwendung / Bemerkung
				to the postal service of the respective country
3207	Country identifier	C	an..3	Country coded according to ISO 3166-1

This segment is used, when the sending party of the message differ from the business partners involved in the transaction (e.g. ship-from and ship-to, buyer and seller, etc.).

Beispiel:

NAD+MS+Identifier::10++Name1:Name2+Street1:Street2+City++12345+FR'

Segmente

Nr	Bez	St	MaxWdh	Name
	SG3	O	1	Additional Party ID (DUNS)
10	RFF	M	1	Reference

Standard		Implementierung			
Bez	Name	St	Format	St	Format Anwendung / Bemerkung
C506	Reference	M		M	
1153	Reference code qualifier	M	an..3	M	an..3 ANK Reference number assigned by third party
1154	Reference identifier	C	an..70	R	n9 DUNS number
1156	Document line identifier	C	an..6	N	Nicht genutzt
1056	Version identifier	C	an..9	N	Nicht genutzt
1060	Revision identifier	C	an..6	N	Nicht genutzt

This segment can be used to transmit the DUNS number of the business partner, in addition to the customer number or the supplier number.

Beispiel:

RFF+ANK: 123456789 '

Segmente

Nr	Bez	St	MaxWdh	Name
	SG3	O	1	Account number
11	RFF	M	1	Account number

Standard		Implementierung			
Bez	Name	St	Format	St	Format Anwendung / Bemerkung
C506	Reference	M		M	
1153	Reference code qualifier	M	an..3	M	an..3 ADE Account number
1154	Reference identifier	C	an..70	R	an..35 Account number
1156	Document line identifier	C	an..6	N	Nicht genutzt
1056	Version identifier	C	an..9	N	Nicht genutzt
1060	Revision identifier	C	an..6	N	Nicht genutzt

Beispiel:

RFF+ADE : 123456789 '

Bez =Bezeichner; Nr = Laufende Segmentnummer im Guide; MaxWdh = Maximale Wiederholung; St = Status (M=Muss/Mandatory, C=Conditional, R=Erforderlich/Required, O=Optional, D=Abhängig von/Dependent, A=Empfohlen/Advised)

Segmente

Nr	Bez	St	MaxWdh	Name
	SG2	O	1	Message Recipient
12	NAD	M	1	Message Recipient - name and address

Standard		Implementierung			
Bez	Name	St	Format	St	Format Anwendung / Bemerkung
3035	Party function code qualifier	M	an..3	M	an..3 MR Message recipient
C082	Party identification details	C		R	
3039	Party identifier	M	an..35	M	an..35
1131	Code list identification code	C	an..17	N	Nicht genutzt
3055	Code list responsible agency code	C	an..3	R	an..3 10 ODETTE 16 US, D&B (Dun & Bradstreet Corporation) 5 ISO (International Organization for Standardization) 3055 O91 Assigned by the provider of the empty packaging O92 Assigned by the receiver of the empty packaging
C058	Name and address	C		N	Nicht genutzt
3124	Name and address description	M	an..35	N	Nicht genutzt
3124	Name and address description	C	an..35	N	Nicht genutzt
3124	Name and address description	C	an..35	N	Nicht genutzt
3124	Name and address description	C	an..35	N	Nicht genutzt
3124	Name and address description	C	an..35	N	Nicht genutzt
C080	Party name	C		O	
3036	Party name	M	an..70	M	an..35 Single text line for specification of a name
3036	Party name	C	an..70	O	an..35 see 3036 # 1
3036	Party name	C	an..70	N	Nicht genutzt
3036	Party name	C	an..70	N	Nicht genutzt
3036	Party name	C	an..70	N	Nicht genutzt
3045	Party name format code	C	an..3	N	Nicht genutzt
C059	Street	C		O	
3042	Street and number or post office box identifier	M	an..35	M	an..35 Part of address identifying the location of a building, normally given together with street
3042	Street and number or post office box identifier	C	an..35	O	an..35 see 3042 # 1
3042	Street and number or post office box identifier	C	an..35	N	Nicht genutzt
3042	Street and number or post office box identifier	C	an..35	N	Nicht genutzt
3164	City name	C	an..35	O	an..35 The name of the city, town, or village of this address.
C819	Country subdivision details	C		O	
3229	Country subdivision identifier	C	an..9	R	an..9 State or region within a country. The use of UN LoCodes is recommended.
1131	Code list identification code	C	an..17	N	Nicht genutzt
3055	Code list responsible agency code	C	an..3	N	Nicht genutzt
3228	Country subdivision name	C	an..70	N	Nicht genutzt
3251	Postal identification code	C	an..17	C	an..17 Identifier of one or more address data properties according

Bez =Bezeichner; Nr = Laufende Segmentnummer im Guide; MaxWdh = Maximale Wiederholung; St = Status (M=Muss/Mandatory, C=Conditional, R=Erforderlich/Required, O=Optional, D=Abhängig von/Dependent, A=Empfohlen/Advised)

Segmente

Standard		Implementierung		
Bez	Name	St	Format	Anwendung / Bemerkung
				to the postal service of the respective country
3207	Country identifier	C	an..3	Country coded according to ISO 3166-1

This segment is used, when the receiving party of the message differ from the business partners involved in the transaction (e.g. ship-from and ship-to, buyer and seller, etc.)

Beispiel:

NAD+MR+Identifier::O92++Name1:Name2+Street1:Street2+City++12345+DE'

Segmente

Nr	Bez	St	MaxWdh	Name
	SG3	O	1	Additional Party ID (DUNS)
13	RFF	M	1	Reference

Standard		Implementierung			
Bez	Name	St	Format	St	Format Anwendung / Bemerkung
C506	Reference	M		M	
1153	Reference code qualifier	M	an..3	M	an..3 ANK Reference number assigned by third party
1154	Reference identifier	C	an..70	R	n9 DUNS number
1156	Document line identifier	C	an..6	N	Nicht genutzt
1056	Version identifier	C	an..9	N	Nicht genutzt
1060	Revision identifier	C	an..6	N	Nicht genutzt

This segment can be used to transmit the DUNS number of the business partner, in addition to the customer number or the supplier number.

Beispiel:

RFF+ANK: 123456789 '

Segmente

Nr	Bez	St	MaxWdh	Name
	SG3	O	1	Account number
14	RFF	M	1	Account number

Standard		Implementierung			
Bez	Name	St	Format	St	Format Anwendung / Bemerkung
C506	Reference	M		M	
1153	Reference code qualifier	M	an..3	M	an..3 ADE Account number
1154	Reference identifier	C	an..70	R	an..35 Account number
1156	Document line identifier	C	an..6	N	Nicht genutzt
1056	Version identifier	C	an..9	N	Nicht genutzt
1060	Revision identifier	C	an..6	N	Nicht genutzt

Beispiel:

RFF+ADE : 123456789 '

Bez =Bezeichner; Nr = Laufende Segmentnummer im Guide; MaxWdh = Maximale Wiederholung; St = Status (M=Muss/Mandatory, C=Conditional, R=Erforderlich/Required, O=Optional, D=Abhängig von/Dependent, A=Empfohlen/Advised)

Segmente

Nr	Bez	St	MaxWdh	Name
	SG2	O	1	Empty Packaging Despatch Party (Ship from's plant)
15	NAD	M	1	Empty Equipment Despatch Party - name and address

Standard		Implementierung			
Bez	Name	St	Format	St	Format Anwendung / Bemerkung
3035	Party function code qualifier	M	an..3	M	an..3 SF Ship from
C082	Party identification details	C		O	
3039	Party identifier	M	an..35	M	an..35
1131	Code list identification code	C	an..17	N	Nicht genutzt
3055	Code list responsible agency code	C	an..3	R	an..3 10 ODETTE 16 US, D&B (Dun & Bradstreet Corporation) 5 ISO (International Organization for Standardization) 3055 091 Assigned by the provider of the empty packaging 092 Assigned by the receiver of the empty packaging
C058	Name and address	C		N	Nicht genutzt
3124	Name and address description	M	an..35	N	Nicht genutzt
3124	Name and address description	C	an..35	N	Nicht genutzt
3124	Name and address description	C	an..35	N	Nicht genutzt
3124	Name and address description	C	an..35	N	Nicht genutzt
3124	Name and address description	C	an..35	N	Nicht genutzt
C080	Party name	C		O	
3036	Party name	M	an..70	M	an..35
3036	Party name	C	an..70	O	an..35 see 3036 # 1
3036	Party name	C	an..70	N	Nicht genutzt
3036	Party name	C	an..70	N	Nicht genutzt
3036	Party name	C	an..70	N	Nicht genutzt
3045	Party name format code	C	an..3	N	Nicht genutzt
C059	Street	C		O	
3042	Street and number or post office box identifier	M	an..35	M	an..35
3042	Street and number or post office box identifier	C	an..35	O	an..35
3042	Street and number or post office box identifier	C	an..35	N	Nicht genutzt
3042	Street and number or post office box identifier	C	an..35	N	Nicht genutzt
3164	City name	C	an..35	O	an..35
C819	Country subdivision details	C		O	
3229	Country subdivision identifier	C	an..9	R	an..9
1131	Code list identification code	C	an..17	N	Nicht genutzt
3055	Code list responsible agency code	C	an..3	N	Nicht genutzt
3228	Country subdivision name	C	an..70	N	Nicht genutzt
3251	Postal identification code	C	an..17	O	an..17 Identifier of one or more address data properties according to the postal service of the respective country

Bez =Bezeichner; Nr = Laufende Segmentnummer im Guide; MaxWdh = Maximale Wiederholung; St = Status (M=Muss/Mandatory, C=Conditional, R=Erforderlich/Required, O=Optional, D=Abhängig von/Dependent, A=Empfohlen/Advised)

Segmente

Standard		Implementierung		
Bez	Name	St	Format	Anwendung / Bemerkung
3207	Country identifier	C	an..3	Country coded according to ISO 3166-1

Beispiel:

NAD+SF+Identifier::10++Name1:Name2+Street1:Street2+City++12345+FR'

Segmente

Nr	Bez	St	MaxWdh	Name
	SG2	O	1	Empty Packaging Despatch Party (Ship from's plant)
16	LOC	O	1	Shipping location/ Place of loading

Standard		Implementierung			
Bez	Name	St	Format	St	Anwendung / Bemerkung
3227	Location function code qualifier	M	an..3	M	an..3
					9 Place of loading
C517	Location identification	C		R	
3225	Location identifier	C	an..35	O	an..17
1131	Code list identification code	C	an..17	N	Nicht genutzt
3055	Code list responsible agency code	C	an..3	D	an..3
					Code specifying the agency responsible for a code list. Has to be provided if 3225 is used. O91 Assigned by the provider of the empty packaging
3224	Location name	C	an..256	O	an..256
					Name of place/location; if necessary, use complete address. If an address is to be specified here, the individual components are to be transferred in a structured manner, separated by semicolons in the order described: Name; Street, house number; Place; Post Code; Regional code; Country (2 digit ISO code).
C519	Related location one identification	C		O	
3223	First related location identifier	C	an..35	R	an..35
					Geo coordinates - latitude/longitude Geo coordinates in decimal degrees: latitude, longitude For latitude: positive values identify the northern hemisphere, negative values the southern hemisphere (-90..90). For longitude: positive values identify the east of the zero meridian, negative values the west of the zero meridian (-180..180).
1131	Code list identification code	C	an..17	N	Nicht genutzt
3055	Code list responsible agency code	C	an..3	N	Nicht genutzt
3222	First related location name	C	an..70	N	Nicht genutzt
C553	Related location two identification	C		N	Nicht genutzt
3233	Second related location identifier	C	an..35	N	Nicht genutzt
1131	Code list identification code	C	an..17	N	Nicht genutzt
3055	Code list responsible agency code	C	an..3	N	Nicht genutzt
3232	Second related location name	C	an..70	N	Nicht genutzt
5479	Relation code	C	an..3	N	Nicht genutzt

The place where the empty packaging is loaded on to the means of transport.

Beispiel:

LOC+9+PlaceOfLoadingID : O91:PlaceOfLoading+52.515738, 13.393085'

Bez =Bezeichner; Nr = Laufende Segmentnummer im Guide; MaxWdh = Maximale Wiederholung; St = Status (M=Muss/Mandatory, C=Conditional, R=Erforderlich/Required, O=Optional, D=Abhängig von/Dependent, A=Empfohlen/Advised)

Segmente

Nr	Bez	St	MaxWdh	Name
	SG3	O	1	Additional Party ID (DUNS)
17	RFF	M	1	Reference

Standard		Implementierung			
Bez	Name	St	Format	St	Format Anwendung / Bemerkung
C506	Reference	M		M	
1153	Reference code qualifier	M	an..3	M	an..3 ANK Reference number assigned by third party
1154	Reference identifier	C	an..70	R	n9 DUNS number
1156	Document line identifier	C	an..6	N	Nicht genutzt
1056	Version identifier	C	an..9	N	Nicht genutzt
1060	Revision identifier	C	an..6	N	Nicht genutzt

This segment can be used to transmit the DUNS number of the business partner, in addition to the customer number or the supplier number.

Beispiel:

RFF+ANK: 123456789 '

Segmente

Nr	Bez	St	MaxWdh	Name
	SG3	O	1	Account number
18	RFF	M	1	Account number

Standard		Implementierung			
Bez	Name	St	Format	St	Format Anwendung / Bemerkung
C506	Reference	M		M	
1153	Reference code qualifier	M	an..3	M	an..3 ADE Account number
1154	Reference identifier	C	an..70	R	an..35 Account number
1156	Document line identifier	C	an..6	N	Nicht genutzt
1056	Version identifier	C	an..9	N	Nicht genutzt
1060	Revision identifier	C	an..6	N	Nicht genutzt

Beispiel:

RFF+ADE : 123456789 '

Bez =Bezeichner; Nr = Laufende Segmentnummer im Guide; MaxWdh = Maximale Wiederholung; St = Status (M=Muss/Mandatory, C=Conditional, R=Erforderlich/Required, O=Optional, D=Abhängig von/Dependent, A=Empfohlen/Advised)

Segmente

Nr	Bez	St	MaxWdh	Name
	SG2	R	1	Empty packaging receiving party (ship to's plant)
19	NAD	M	1	Empty equipment receiving party (Ship to's plant)

Standard		Implementierung			
Bez	Name	St	Format	St	Format Anwendung / Bemerkung
3035	Party function code qualifier	M	an..3	M	an..3 ST Ship to
C082	Party identification details	C		R	
3039	Party identifier	M	an..35	M	an..35
1131	Code list identification code	C	an..17	N	Nicht genutzt
3055	Code list responsible agency code	C	an..3	R	an..3 10 ODETTE 16 US, D&B (Dun & Bradstreet Corporation) 5 ISO (International Organization for Standardization) 3055 O91 Assigned by the provider of the empty packaging O92 Assigned by the receiver of the empty packaging
C058	Name and address	C		N	Nicht genutzt
3124	Name and address description	M	an..35	M	an..35
3124	Name and address description	C	an..35	N	Nicht genutzt
3124	Name and address description	C	an..35	N	Nicht genutzt
3124	Name and address description	C	an..35	N	Nicht genutzt
3124	Name and address description	C	an..35	N	Nicht genutzt
C080	Party name	C		O	
3036	Party name	M	an..70	M	an..35 Single text line for specification of a name
3036	Party name	C	an..70	O	an..35 see 3036 # 1
3036	Party name	C	an..70	N	Nicht genutzt
3036	Party name	C	an..70	N	Nicht genutzt
3036	Party name	C	an..70	N	Nicht genutzt
3045	Party name format code	C	an..3	N	Nicht genutzt
C059	Street	C		O	
3042	Street and number or post office box identifier	M	an..35	M	an..35 Part of address identifying the location of a building, normally given together with street
3042	Street and number or post office box identifier	C	an..35	O	an..35 see 3042 # 1
3042	Street and number or post office box identifier	C	an..35	N	Nicht genutzt
3042	Street and number or post office box identifier	C	an..35	N	Nicht genutzt
3164	City name	C	an..35	O	an..35 The name of the city, town, or village of this address.
C819	Country subdivision details	C		O	
3229	Country subdivision identifier	C	an..9	R	an..9 State or region within a country. The use of UN LoCodes is recommended.
1131	Code list identification code	C	an..17	N	Nicht genutzt
3055	Code list responsible agency code	C	an..3	N	Nicht genutzt
3228	Country subdivision name	C	an..70	N	Nicht genutzt
3251	Postal identification code	C	an..17	O	an..17 Identifier of one or more address data properties according

Bez =Bezeichner; Nr = Laufende Segmentnummer im Guide; MaxWdh = Maximale Wiederholung; St = Status (M=Muss/Mandatory, C=Conditional, R=Erforderlich/Required, O=Optional, D=Abhängig von/Dependent, A=Empfohlen/Advised)

Segmente

Standard		Implementierung		
Bez	Name	St	Format	Anwendung / Bemerkung
				to the postal service of the respective country
3207	Country identifier	C	an..3	Country coded according to ISO 3166-1

Beispiel:

NAD+ST+Identifier::10++Name1:Name2+Street1:Street2+City++12345+DE'

Bez =Bezeichner; Nr = Laufende Segmentnummer im Guide; MaxWdh = Maximale Wiederholung; St = Status (M=Muss/Mandatory, C=Conditional, R=Erforderlich/Required, O=Optional, D=Abhängig von/Dependent, A=Empfohlen/Advised)

Segmente

Nr	Bez	St	MaxWdh	Name
	SG2	R	1	Empty packaging receiving party (ship to's plant)
20	LOC	O	1	Place of discharge / unloading point

Standard		Implementierung			
Bez	Name	St	Format	St	Anwendung / Bemerkung
3227	Location function code qualifier	M	an..3	M	an..3
11 Place of discharge					
C517	Location identification	C		R	
3225	Location identifier	C	an..35	O	an..17 Identifier of location, site, etc.
1131	Code list identification code	C	an..17	N	Nicht genutzt
3055	Code list responsible agency code	C	an..3	D	an..3 Code specifying the agency responsible for a code list. Has to be provided if 3225 is used. O92 Assigned by the receiver of the empty packaging 3055
3224	Location name	C	an..256	O	an..256 Name of place/location; if necessary, use complete address. If an address is to be specified here, the individual components are to be transferred in a structured manner, separated by semicolons in the order described: Name; Street, house number; Place; Post Code; Regional code; Country (2 digit ISO code).
C519	Related location one identification	C		O	
3223	First related location identifier	C	an..35	R	an..35 Geo coordinates - latitude/longitude Geo coordinates in decimal degrees: latitude, longitude For latitude: positive values identify the northern hemisphere, negative values the southern hemisphere (-90..90). For longitude: positive values identify the east of the zero meridian, negative values the west of the zero meridian (-180..180).
1131	Code list identification code	C	an..17	N	Nicht genutzt
3055	Code list responsible agency code	C	an..3	N	Nicht genutzt
3222	First related location name	C	an..70	N	Nicht genutzt
C553	Related location two identification	C		N	Nicht genutzt
3233	Second related location identifier	C	an..35	N	Nicht genutzt
1131	Code list identification code	C	an..17	N	Nicht genutzt
3055	Code list responsible agency code	C	an..3	N	Nicht genutzt
3232	Second related location name	C	an..70	N	Nicht genutzt
5479	Relation code	C	an..3	N	Nicht genutzt

The place where the empty packaging is unloaded from the means of transport. For automatic acceptance of the packaging order proposal the unloading point must be included.

Beispiel:

LOC+11+PlaceDischargeID::O92:PlaceOfDischarge+52.515738, 13.393085'

Bez =Bezeichner; Nr = Laufende Segmentnummer im Guide; MaxWdh = Maximale Wiederholung; St = Status (M=Muss/Mandatory, C=Conditional, R=Erforderlich/Required, O=Optional, D=Abhängig von/Dependent, A=Empfohlen/Advised)

Segmente

Nr	Bez	St	MaxWdh	Name
	SG3	O	1	Additional Party ID (DUNS)
21	RFF	M	1	Reference

Standard		Implementierung			
Bez	Name	St	Format	St	Format Anwendung / Bemerkung
C506	Reference	M		M	
1153	Reference code qualifier	M	an..3	M	an..3 ANK Reference number assigned by third party
1154	Reference identifier	C	an..70	R	n9 DUNS number
1156	Document line identifier	C	an..6	N	Nicht genutzt
1056	Version identifier	C	an..9	N	Nicht genutzt
1060	Revision identifier	C	an..6	N	Nicht genutzt

This segment can be used to transmit the DUNS number of the business partner, in addition to the customer number or the supplier number.

Beispiel:

RFF+ANK: 123456789 '

Segmente

Nr	Bez	St	MaxWdh	Name
	SG3	O	1	Account number
22	RFF	M	1	Account number

Standard		Implementierung			
Bez	Name	St	Format	St	Format Anwendung / Bemerkung
C506	Reference	M		M	
1153	Reference code qualifier	M	an..3	M	an..3 ADE Account number
1154	Reference identifier	C	an..70	R	an..35 Account number
1156	Document line identifier	C	an..6	N	Nicht genutzt
1056	Version identifier	C	an..9	N	Nicht genutzt
1060	Revision identifier	C	an..6	N	Nicht genutzt

Beispiel:

RFF+ADE : 123456789 '

Bez =Bezeichner; Nr = Laufende Segmentnummer im Guide; MaxWdh = Maximale Wiederholung; St = Status (M=Muss/Mandatory, C=Conditional, R=Erforderlich/Required, O=Optional, D=Abhängig von/Dependent, A=Empfohlen/Advised)

Segmente

Nr	Bez	St	MaxWdh	Name
	SG5	O	1	Information contact
		Information that identifies the contact person or department on general matters, together with information about how they can be contacted.		
23	CTA	M	1	Information contact

Standard		Implementierung		
Bez	Name	St	Format	Anwendung / Bemerkung
3139	Contact function code	C	an..3	C an..3
				IC Information contact
C056	Contact details	C		O
3413	Contact identifier	C	an..17	O an..17 Identifies the department or employee by a unique identifier other than their name when given as a contact.
3412	Contact name	C	an..256	O an..35 Name of the contact person or department

Information that identifies the contact person or department on general matters, together with information about how they can be contacted.

Beispiel:

CTA+IC+DepartmentEmploID:ContactPersonOrDepartmentName '

Segmente

Nr	Bez	St	MaxWdh	Name
----	-----	----	--------	------

SG5 O 1 Information contact

Information that identifies the contact person or department on general matters, together with information about how they can be contacted.

24 **COM** O 3 Communication contact

Standard			Implementierung		
Bez	Name	St	Format	St	Format Anwendung / Bemerkung
C076	Communication contact	M		M	
3148	Communication address identifier	M	an..512	M	an..100 Communication number / address
3155	Communication means type code	M	an..3	M	an..3
			TE Telephone FX Telefax EM Electronic mail IM Internal mail		

Beispiel:

COM+00491234567890:TE'

Segmente

Nr	Bez	St	MaxWdh	Name
	SG2	O	1	Packaging Manager Party
25	NAD	M	1	Packaging Manager Party

Standard		Implementierung			
Bez	Name	St	Format	St	Anwendung / Bemerkung
3035	Party function code qualifier	M	an..3	M	an..3 EQ Empty container responsible party
C082	Party identification details	C		R	
3039	Party identifier	M	an..35	M	an..35 Unique identifier of business partner (customer number, supplier number, DUNS number, etc.).
1131	Code list identification code	C	an..17	N	Nicht genutzt
3055	Code list responsible agency code	C	an..3	R	an..3 Code specifying the agency responsible for a code list. 10 ODETTE 16 US, D&B (Dun & Bradstreet Corporation) 5 ISO (International Organization for Standardization) 3055 091 Assigned by the provider of the empty packaging 092 Assigned by the receiver of the empty packaging
C058	Name and address	C		N	Nicht genutzt
3124	Name and address description	M	an..35	N	Nicht genutzt
3124	Name and address description	C	an..35	N	Nicht genutzt
3124	Name and address description	C	an..35	N	Nicht genutzt
3124	Name and address description	C	an..35	N	Nicht genutzt
3124	Name and address description	C	an..35	N	Nicht genutzt
C080	Party name	C		O	
3036	Party name	M	an..70	M	an..70 Single text line for specification of a name
3036	Party name	C	an..70	O	an..70 see 3036 # 1
3036	Party name	C	an..70	N	Nicht genutzt
3036	Party name	C	an..70	N	Nicht genutzt
3036	Party name	C	an..70	N	Nicht genutzt
3045	Party name format code	C	an..3	N	Nicht genutzt
C059	Street	C		O	
3042	Street and number or post office box identifier	M	an..35	M	an..35 Part of address identifying the location of a building, normally given together with street
3042	Street and number or post office box identifier	C	an..35	O	an..35 see 3042 # 1
3042	Street and number or post office box identifier	C	an..35	N	Nicht genutzt
3042	Street and number or post office box identifier	C	an..35	N	Nicht genutzt
3164	City name	C	an..35	O	an..35 The name of the city, town, or village of this address.
C819	Country subdivision details	C		O	
3229	Country subdivision identifier	C	an..9	R	an..9 State or region within a country. The use of UN LoCodes is recommended.
1131	Code list identification code	C	an..17	N	Nicht genutzt
3055	Code list responsible agency code	C	an..3	N	Nicht genutzt
3228	Country subdivision name	C	an..70	N	Nicht genutzt

Bez =Bezeichner; Nr = Laufende Segmentnummer im Guide; MaxWdh = Maximale Wiederholung; St = Status (M=Muss/Mandatory, C=Conditional, R=Erforderlich/Required, O=Optional, D=Abhängig von/Dependent, A=Empfohlen/Advised)

Segmente

Standard		Implementierung		
Bez	Name	St	Format	Anwendung / Bemerkung
3251	Postal identification code	C	an..17	Identifier of one or more address data properties according to the postal service of the respective country
3207	Country identifier	C	an..3	Country coded according to ISO 3166-1

Beispiel:

NAD+EQ+Identifier::091++Name1:Name2+Street1:Street2+City++12345+DE'

Bez =Bezeichner; Nr = Laufende Segmentnummer im Guide; MaxWdh = Maximale Wiederholung; St = Status (M=Muss/Mandatory, C=Conditional, R=Erforderlich/Required, O=Optional, D=Abhängig von/Dependent, A=Empfohlen/Advised)

Segmente

Nr	Bez	St	MaxWdh	Name
	SG3	O	1	Additional Party ID (DUNS)
26	RFF	M	1	Reference

Standard		Implementierung			
Bez	Name	St	Format	St	Format Anwendung / Bemerkung
C506	Reference	M		M	
1153	Reference code qualifier	M	an..3	M	an..3 ANK Reference number assigned by third party
1154	Reference identifier	C	an..70	R	n9 DUNS number
1156	Document line identifier	C	an..6	N	Nicht genutzt
1056	Version identifier	C	an..9	N	Nicht genutzt
1060	Revision identifier	C	an..6	N	Nicht genutzt

This segment can be used to transmit the DUNS number of the business partner, in addition to the customer number or the supplier number.

Beispiel:

RFF+ANK:123456789'

Segmente

Nr	Bez	St	MaxWdh	Name
	SG3	O	1	Account number
27	RFF	M	1	Account number

Standard		Implementierung			
Bez	Name	St	Format	St	Format Anwendung / Bemerkung
C506	Reference	M		M	
1153	Reference code qualifier	M	an..3	M	an..3 ADE Account number
1154	Reference identifier	C	an..70	R	an..35 Account number
1156	Document line identifier	C	an..6	N	Nicht genutzt
1056	Version identifier	C	an..9	N	Nicht genutzt
1060	Revision identifier	C	an..6	N	Nicht genutzt

Beispiel:

RFF+ADE : 123456789 '

Bez =Bezeichner; Nr = Laufende Segmentnummer im Guide; MaxWdh = Maximale Wiederholung; St = Status (M=Muss/Mandatory, C=Conditional, R=Erforderlich/Required, O=Optional, D=Abhängig von/Dependent, A=Empfohlen/Advised)

Segmente

Nr	Bez	St	MaxWdh	Name
----	-----	----	--------	------

SG2 R 1 Buyer of the packaging service
Typically the supplier in the full product process

28 **NAD** M 1 Buyer's name and address

Standard			Implementierung		
Bez	Name	St Format	St Format	Anwendung / Bemerkung	
3035	Party function code qualifier	M an..3	M an..3	BY Buyer	
C082	Party identification details	C	R		
3039	Party identifier	M an..35	M an..35	Unique identifier of business partner (customer number, supplier number, DUNS number, etc.).	
1131	Code list identification code	C an..17	N	Nicht genutzt	
3055	Code list responsible agency code	C an..3	R an..3	Code specifying the agency responsible for a code list. 10 ODETTE 16 US, D&B (Dun & Bradstreet Corporation) 5 ISO (International Organization for Standardization) 3055 091 Assigned by the provider of the empty packaging 092 Assigned by the receiver of the empty packaging	
C058	Name and address	C	N	Nicht genutzt	
3124	Name and address description	M an..35	N	Nicht genutzt	
3124	Name and address description	C an..35	N	Nicht genutzt	
3124	Name and address description	C an..35	N	Nicht genutzt	
3124	Name and address description	C an..35	N	Nicht genutzt	
3124	Name and address description	C an..35	N	Nicht genutzt	
C080	Party name	C	O		
3036	Party name	M an..70	M an..35	Single text line for specification of a name	
3036	Party name	C an..70	O an..35	see 3036 # 1	
3036	Party name	C an..70	N	Nicht genutzt	
3036	Party name	C an..70	N	Nicht genutzt	
3036	Party name	C an..70	N	Nicht genutzt	
3045	Party name format code	C an..3	N	Nicht genutzt	
C059	Street	C	O		
3042	Street and number or post office box identifier	M an..35	M an..35	Part of address identifying the location of a building, normally given together with street	
3042	Street and number or post office box identifier	C an..35	O an..35	see 3042 # 1	
3042	Street and number or post office box identifier	C an..35	N	Nicht genutzt	
3042	Street and number or post office box identifier	C an..35	N	Nicht genutzt	
3164	City name	C an..35	O an..35	The name of the city, town, or village of this address.	
C819	Country subdivision details	C	O		
3229	Country subdivision identifier	C an..9	R an..9	State or region within a country. The use of UN LoCodes is recommended.	
1131	Code list identification code	C an..17	N	Nicht genutzt	
3055	Code list responsible agency code	C an..3	N	Nicht genutzt	
3228	Country subdivision name	C an..70	N	Nicht genutzt	

Bez =Bezeichner; Nr = Laufende Segmentnummer im Guide; MaxWdh = Maximale Wiederholung; St = Status (M=Muss/Mandatory, C=Conditional, R=Erforderlich/Required, O=Optional, D=Abhängig von/Dependent, A=Empfohlen/Advised)

Segmente

Standard		Implementierung		
Bez	Name	St	Format	Anwendung / Bemerkung
3251	Postal identification code	C	an..17	Identifier of one or more address data properties according to the postal service of the respective country
3207	Country identifier	C	an..3	Country coded according to ISO 3166-1

Beispiel:

NAD+BY+Identifier::O91++Name1:Name2+Street1:Street2+City++12345+SE'

Bez =Bezeichner; Nr = Laufende Segmentnummer im Guide; MaxWdh = Maximale Wiederholung; St = Status (M=Muss/Mandatory, C=Conditional, R=Erforderlich/Required, O=Optional, D=Abhängig von/Dependent, A=Empfohlen/Advised)

Segmente

Nr	Bez	St	MaxWdh	Name
	SG3	O	1	Additional Party ID (DUNS)
29	RFF	M	1	Reference

Standard		Implementierung			
Bez	Name	St	Format	St	Format Anwendung / Bemerkung
C506	Reference	M		M	
1153	Reference code qualifier	M	an..3	M	an..3 ANK Reference number assigned by third party
1154	Reference identifier	C	an..70	R	n9 DUNS number
1156	Document line identifier	C	an..6	N	Nicht genutzt
1056	Version identifier	C	an..9	N	Nicht genutzt
1060	Revision identifier	C	an..6	N	Nicht genutzt

This segment can be used to transmit the DUNS number of the business partner, in addition to the customer number or the supplier number.

Beispiel:

RFF+ANK: 123456789 '

Segmente

Nr	Bez	St	MaxWdh	Name
	SG3	O	1	Account number
30	RFF	M	1	Account number

Standard		Implementierung			
Bez	Name	St	Format	St	Format Anwendung / Bemerkung
C506	Reference	M		M	
1153	Reference code qualifier	M	an..3	M	an..3 ADE Account number
1154	Reference identifier	C	an..70	R	an..35 Account number
1156	Document line identifier	C	an..6	N	Nicht genutzt
1056	Version identifier	C	an..9	N	Nicht genutzt
1060	Revision identifier	C	an..6	N	Nicht genutzt

Beispiel:

RFF+ADE : 123456789 '

Bez =Bezeichner; Nr = Laufende Segmentnummer im Guide; MaxWdh = Maximale Wiederholung; St = Status (M=Muss/Mandatory, C=Conditional, R=Erforderlich/Required, O=Optional, D=Abhängig von/Dependent, A=Empfohlen/Advised)

Segmente

Nr	Bez	St	MaxWdh	Name
	SG2	R	1	Seller / Supplier of the packaging service
31	NAD	M	1	Seller / Supplier of the packaging service

Standard		Implementierung			
Bez	Name	St	Format	St	Format Anwendung / Bemerkung
3035	Party function code qualifier	M	an..3	M	an..3 SE Seller
C082	Party identification details	C		R	
3039	Party identifier	M	an..35	M	an..35 Unique identifier of business partner (customer number, supplier number, DUNS number, etc.).
1131	Code list identification code	C	an..17	N	Nicht genutzt
3055	Code list responsible agency code	C	an..3	R	an..3 Code specifying the agency responsible for a code list. 10 ODETTE 16 US, D&B (Dun & Bradstreet Corporation) 5 ISO (International Organization for Standardization) 3055 091 Assigned by the provider of the empty packaging 092 Assigned by the receiver of the empty packaging
C058	Name and address	C		N	Nicht genutzt
3124	Name and address description	M	an..35	N	Nicht genutzt
3124	Name and address description	C	an..35	N	Nicht genutzt
3124	Name and address description	C	an..35	N	Nicht genutzt
3124	Name and address description	C	an..35	N	Nicht genutzt
3124	Name and address description	C	an..35	N	Nicht genutzt
C080	Party name	C		O	
3036	Party name	M	an..70	M	an..35 Single text line for specification of a name
3036	Party name	C	an..70	O	an..35 see 3036 # 1
3036	Party name	C	an..70	N	Nicht genutzt
3036	Party name	C	an..70	N	Nicht genutzt
3036	Party name	C	an..70	N	Nicht genutzt
3045	Party name format code	C	an..3	N	Nicht genutzt
C059	Street	C		O	
3042	Street and number or post office box identifier	M	an..35	M	an..35 Part of address identifying the location of a building, normally given together with street.
3042	Street and number or post office box identifier	C	an..35	O	an..35 see 3042 # 1
3042	Street and number or post office box identifier	C	an..35	N	Nicht genutzt
3042	Street and number or post office box identifier	C	an..35	N	Nicht genutzt
3164	City name	C	an..35	O	an..35 The name of the city, town, or village of this address.
C819	Country subdivision details	C		O	
3229	Country subdivision identifier	C	an..9	R	an..9 State or region within a country. The use of UN LoCodes is recommended.
1131	Code list identification code	C	an..17	N	Nicht genutzt
3055	Code list responsible agency code	C	an..3	N	Nicht genutzt
3228	Country subdivision name	C	an..70	N	Nicht genutzt

Bez =Bezeichner; Nr = Laufende Segmentnummer im Guide; MaxWdh = Maximale Wiederholung; St = Status (M=Muss/Mandatory, C=Conditional, R=Erforderlich/Required, O=Optional, D=Abhängig von/Dependent, A=Empfohlen/Advised)

Segmente

Standard		Implementierung		
Bez	Name	St	Format	Anwendung / Bemerkung
3251	Postal identification code	C	an..17	Identifier of one or more address data properties according to the postal service of the respective country
3207	Country identifier	C	an..3	Country coded according to ISO 3166-1

Beispiel:

NAD+SE+Identifier::092++Name1:Name2+Street1:Street2+City++12345+DE'

Bez =Bezeichner; Nr = Laufende Segmentnummer im Guide; MaxWdh = Maximale Wiederholung; St = Status (M=Muss/Mandatory, C=Conditional, R=Erforderlich/Required, O=Optional, D=Abhängig von/Dependent, A=Empfohlen/Advised)

Segmente

Nr	Bez	St	MaxWdh	Name
	SG3	O	1	Additional Party ID (DUNS)
32	RFF	M	1	Reference

Standard		Implementierung		
Bez	Name	St	Format	Anwendung / Bemerkung
C506	Reference	M		M
1153	Reference code qualifier	M	an..3	M an..3 ANK Reference number assigned by third party
1154	Reference identifier	C	an..70	R n9 DUNS number
1156	Document line identifier	C	an..6	N Nicht genutzt
1056	Version identifier	C	an..9	N Nicht genutzt
1060	Revision identifier	C	an..6	N Nicht genutzt

This segment can be used to transmit the DUNS number of the business partner, in addition to the customer number or the supplier number.

The account number (Qualifier ADE) can be used if aside of the supplier number and the DUNS number a third identifier is necessary (e.g. in certain CKD delivery processes).

Beispiel:

RFF+ANK: 987654321 '

Segmente

Nr	Bez	St	MaxWdh	Name
	SG3	O	1	Account number
33	RFF	M	1	Account number

Standard		Implementierung			
Bez	Name	St	Format	St	Format Anwendung / Bemerkung
C506	Reference	M		M	
1153	Reference code qualifier	M	an..3	M	an..3 ADE Account number
1154	Reference identifier	C	an..70	R	an..35 Account number
1156	Document line identifier	C	an..6	N	Nicht genutzt
1056	Version identifier	C	an..9	N	Nicht genutzt
1060	Revision identifier	C	an..6	N	Nicht genutzt

Beispiel:

RFF+ADE : 123456789 '

Bez =Bezeichner; Nr = Laufende Segmentnummer im Guide; MaxWdh = Maximale Wiederholung; St = Status (M=Muss/Mandatory, C=Conditional, R=Erforderlich/Required, O=Optional, D=Abhängig von/Dependent, A=Empfohlen/Advised)

Segmente

Nr	Bez	St	MaxWdh	Name
	SG29	R	200000	Package identification and ordered quantity
34	LIN	M	1	Packaging code of supplier of empties

Standard		Implementierung			
Bez	Name	St	Format	St	Format Anwendung / Bemerkung
1082	Line item identifier	C	an..6	R	an..6 Unique identifier for a line item.
1229	Action code	C	an..3	N	Nicht genutzt
C212	Item number identification	C		R	
7140	Item identifier	C	an..35	R	an..35 Packaging code of the packaging supplier Designation of packaging
7143	Item type identification code	C	an..3	R	an..3 091 Assigned by the provider of the empty packaging ODDC101(1)
1131	Code list identification code	C	an..17	N	Nicht genutzt
3055	Code list responsible agency code	C	an..3	N	Nicht genutzt
C829	Sub-line information	C		N	Nicht genutzt
5495	Sub-line indicator code	C	an..3	N	Nicht genutzt
1082	Line item identifier	C	an..6	N	Nicht genutzt
1222	Configuration level number	C	n..2	N	Nicht genutzt
7083	Configuration operation code	C	an..3	N	Nicht genutzt

Beispiel:

LIN+1++1234567890:091'

Bez =Bezeichner; Nr = Laufende Segmentnummer im Guide; MaxWdh = Maximale Wiederholung; St = Status (M=Muss/Mandatory, C=Conditional, R=Erforderlich/Required, O=Optional, D=Abhängig von/Dependent, A=Empfohlen/Advised)

Segmente

Nr	Bez	St	MaxWdh	Name
	SG29	R	200000	Package identification and ordered quantity
35	PIA	O	1	Additional package type code

Standard		Implementierung			
Bez	Name	St	Format	St	Format Anwendung / Bemerkung
4347	Product identifier code qualifier	M	an..3	M	an..3
					1 Additional identification
C212	Item number identification	M		M	
7140	Item identifier	C	an..35	R	an..35 Additional package type code
7143	Item type identification code	C	an..3	R	an..3
					BJ = Package Bundle Type Code BJ Next higher assembly number X1 GALIA France Package Type Code ODDC101(1) X2 VDA Germany Package Type Code ODDC101(1) X3 Other third party Package Type Code ODDC101(1) O92 Assigned by the receiver of the empty packaging ODDC101(1)
1131	Code list identification code	C	an..17	N	Nicht genutzt
3055	Code list responsible agency code	C	an..3	N	Nicht genutzt
C212	Item number identification	C		O	see C212#1
7140	Item identifier	C	an..35	R	an..35
7143	Item type identification code	C	an..3	R	an..3 See C212#1 data element 7143
1131	Code list identification code	C	an..17	N	Nicht genutzt
3055	Code list responsible agency code	C	an..3	N	Nicht genutzt
C212	Item number identification	C		O	see C212#1
7140	Item identifier	C	an..35	R	an..35
7143	Item type identification code	C	an..3	R	an..3 See C212#1 data element 7143
1131	Code list identification code	C	an..17	N	Nicht genutzt
3055	Code list responsible agency code	C	an..3	N	Nicht genutzt
C212	Item number identification	C		O	see C212#1
7140	Item identifier	C	an..35	R	an..35
7143	Item type identification code	C	an..3	R	an..3 See C212#1 data element 7143
1131	Code list identification code	C	an..17	N	Nicht genutzt
3055	Code list responsible agency code	C	an..3	N	Nicht genutzt
C212	Item number identification	C		O	see C212#1
7140	Item identifier	C	an..35	R	an..35
7143	Item type identification code	C	an..3	R	an..3 See C212#1 data element 7143
1131	Code list identification code	C	an..17	N	Nicht genutzt
3055	Code list responsible agency code	C	an..3	N	Nicht genutzt

Supplier's package type code and / or package type code of a third party

The sequence of the individual IDs in C212 is free. The first C212 must however be filled. The remaining C212 are optional.

Beispiel:

Bez =Bezeichner; Nr = Laufende Segmentnummer im Guide; MaxWdh = Maximale Wiederholung; St = Status (M=Muss/Mandatory, C=Conditional, R=Erforderlich/Required, O=Optional, D=Abhängig von/Dependent, A=Empfohlen/Advised)

Segmente

**PIA+1+PackageTypeCode:BJ+PackageTypeCode:092+PackageType-Organisation:X1+P
ackageType-Organisation:X2+PackageType-Organisation:X3'**

Segmente

Nr	Bez	St	MaxWdh	Name
	SG29	R	200000	Package identification and ordered quantity
36	IMD	O	1	Package folded Indicator

Standard			Implementierung		
Bez	Name	St	Format	St	Anwendung / Bemerkung
7077	Description format code	C	an..3	R	an..3 S Structured (from industry code list)
C272	Item characteristic	C		O	
7081	Item characteristic code	C	an..3	R	an..3 Package Folded Indicator FO Empty container, folded ODDC154(1)
1131	Code list identification code	C	an..17	N	Nicht genutzt
3055	Code list responsible agency code	C	an..3	R	an..3 10 ODETTE
C273	Item description	C		N	Nicht genutzt
7009	Item description code	C	an..17	N	Nicht genutzt
1131	Code list identification code	C	an..17	N	Nicht genutzt
3055	Code list responsible agency code	C	an..3	N	Nicht genutzt
7008	Item description	C	an..256	N	Nicht genutzt
7008	Item description	C	an..256	N	Nicht genutzt
3453	Language name code	C	an..3	N	Nicht genutzt
7383	Surface or layer code	C	an..3	N	Nicht genutzt

Beispiel:

IMD+S+FO : : 10 '

Bez = Bezeichner; Nr = Laufende Segmentnummer im Guide; MaxWdh = Maximale Wiederholung; St = Status (M=Muss/Mandatory, C=Conditional, R=Erforderlich/Required, O=Optional, D=Abhängig von/Dependent, A=Empfohlen/Advised)

Segmente

Nr	Bez	St	MaxWdh	Name
	SG29	R	200000	Package identification and ordered quantity
37	QTY	R	1	Ordered quantity

Standard		Implementierung		
Bez	Name	St	Format	Anwendung / Bemerkung
C186	Quantity details	M		M
6063	Quantity type code qualifier	M	an..3	M an..3 21 Ordered quantity
6060	Quantity	M	an..35	M n..9 The quantity that is or has been ordered by the packaging buyer.
6411	Measurement unit code	C	an..8	O an..8 Code specifying the unit of measurement, use UN/ECE Recommendation 20, Common code. C62 one

Beispiel:

QTY+21 : 9 : C62 '

Bez =Bezeichner; Nr = Laufende Segmentnummer im Guide; MaxWdh = Maximale Wiederholung; St = Status (M=Muss/Mandatory, C=Conditional, R=Erforderlich/Required, O=Optional, D=Abhängig von/Dependent, A=Empfohlen/Advised)

Segmente

Nr	Bez	St	MaxWdh	Name
38	UNS	M	1	Section control

Standard		Implementierung		
Bez	Name	St	Format	Anwendung / Bemerkung
0081	Section identification	M	a1	M a1 S Detail/summary section separation

This service segment is mandatory by UN/EDIFACT.

Beispiel:

UNS+S

Segmente

Nr	Bez	St	MaxWdh	Name
39	UNT	M	1	Message trailer

Standard			Implementierung		
Bez	Name	St Format	St Format	Anwendung / Bemerkung	
0074	Number of segments in the message	M n..6	M n..6	Number of segments in the message	
0062	Message reference number	M an..14	M an..14	Message reference number	

Beispiel:

UNT+37+12345 '

Bez =Bezeichner; Nr = Laufende Segmentnummer im Guide; MaxWdh = Maximale Wiederholung; St = Status (M=Muss/Mandatory, C=Conditional, R=Erforderlich/Required, O=Optional, D=Abhängig von/Dependent, A=Empfohlen/Advised)

Segmente

Nr	Bez	St	MaxWdh	Name
40	UNZ	M	1	Interchange trailer

Standard		Implementierung		
Bez	Name	St	Format	Anwendung / Bemerkung
0036	Interchange control count	M	n..6	Number of messages in the interchange
0020	Interchange control reference	M	an..14	Unique ID of the interchange.

Beispiel:

UNZ+1+2022000025'

Bez =Bezeichner; Nr = Laufende Segmentnummer im Guide; MaxWdh = Maximale Wiederholung; St = Status (M=Muss/Mandatory, C=Conditional, R=Erforderlich/Required, O=Optional, D=Abhängig von/Dependent, A=Empfohlen/Advised)

Applicable codes

0001 Syntax identifier		
Code	Name/description	Code list
UNOA	UN/ECE level A	0001
UNOB	UN/ECE level B	0001
UNOC	UN/ECE level C	0001
UNOD	UN/ECE level D	0001
UNOW	UN/ECE level W	0001
0002 Syntax version number		
Code	Name/description	Code list
X	Syntax version 4 ISO 9735-11 profile.	0002
0007 Partner identification code qualifier		
Code	Name/description	Code list
1	DUNS (Data Universal Numbering System)	0007
4	IATA (International Air Transport Association)	0007
5	INSEE (Institut National de la Statistique et des Etudes Economiques) - SIRET	0007
8	UCC Communications ID (Uniform Code Council Communications Identifier)	0007
9	DUNS (Data Universal Numbering System) with 4 digit suffix	0007
12	Telephone number	0007
14	GS1	0007
18	AIAG (Automotive Industry Action Group)	0007
22	INSEE (Institut National de la Statistique et des Etudes Economiques) - SIREN	0007
30	ISO 6523: Organization identification	0007
31	DIN (Deutsches Institut fuer Normung)	0007
33	BfA (Bundesversicherungsanstalt fuer Angestellte)	0007
34	National Statistical Agency	0007
51	GEIS (General Electric Information Services)	0007
52	INS (IBM Network Services)	0007
53	Datenzentrale des Einzelhandels	0007
54	Bundesverband der Deutschen Baustoffhaendler	0007
55	Bank identifier code	0007
57	KTNet (Korea Trade Network Services)	0007
58	UPU (Universal Postal Union)	0007
59	ODETTE (Organization for Data Exchange through Tele- Transmission in Europe)	0007
61	SCAC (Standard Carrier Alpha Code)	0007
63	ECA (Electronic Commerce Australia)	0007
65	TELEBOX 400 (Deutsche Telekom)	0007
80	NHS (National Health Service)	0007
82	Statens Teleforvaltning	0007
84	Athens Chamber of Commerce	0007
85	Swiss Chamber of Commerce	0007
86	US Council for International Business	0007
87	National Federation of Chambers of Commerce and Industry	0007
89	Association of British Chambers of Commerce	0007
90	SITA (Societe Internationale de Telecommunications Aeronautiques)	0007
91	Assigned by seller or seller's agent	0007
92	Assigned by buyer or buyer's agent	0007
103	TW, Trade-van	0007
128	CH, BCNR (Swiss Clearing Bank Number)	0007
129	CH, BPI (Swiss Business Partner Identification)	0007
144	US, DoDAAC (Department of Defense Activity Address Code)	0007
145	FR, DGCP (Direction Generale de la Comptabilite Publique)	0007
146	FR, DGI (Direction Generale des Impots)	0007
147	JP, JIPDEC/ECPC (Japan Information Processing Development Corporation / Electronic Commerce Promotion Center)	0007

Applicable codes

Code	Name/description	Code list
148	ITU (International Telecommunications Union) Data Network Identification Code (DNIC)	0007
500	DE, BDEW (Bundesverband der Energie- und Wasserwirtschaft e.V.)	0007
501	EASEE-gas (European Association for the Streamlining of Energy Exchange)	0007
502	DE, DVGW (Deutsche Vereinigung des Gas- und Wasserfaches e.V.)	0007
Z01	Vehicle registration number	0007
ZZZ	Mutually defined	0007
0035	Test indicator	
Code	Name/description	Code list
1	Interchange is a test	0035
0051	Controlling agency	
Code	Name/description	Code list
UN	UN/CEFACT	0051
0052	Message version number	
Code	Name/description	Code list
D	Draft version/UN/EDIFACT Directory	0052
0054	Message release number	
Code	Name/description	Code list
16A	Release 2016 - A	0054
0057	Association assigned code	
Code	Name/description	Code list
GAVR30	VDA Packaging Order V3.0	JAI016
0065	Message type	
Code	Name/description	Code list
ORDERS	Purchase order message	0065
0081	Section identification	
Code	Name/description	Code list
S	Detail/summary section separation	0081
1001	Document name code	
Code	Name/description	Code list
X03	Packaging Order	ODDC001(1)
1153	Reference code qualifier	
Code	Name/description	Code list
X01	Packaging order proposal reference	ODDC001(C)
ADE	Account number	1153
ANK	Reference number assigned by third party	1153
AOZ	Implementation version number	1153
1225	Message function code	
Code	Name/description	Code list
9	Original	1225
2005	Date or time or period function code qualifier	
Code	Name/description	Code list
2	Delivery date/time, requested	2005
137	Document issue date time	2005
2379	Date or time or period format code	
Code	Name/description	Code list
102	CCYYMMDD	2379
203	CCYYMMDDHHMM	2379

Applicable codes

Code	Name/description	Code list
205	CCYYMMDDHHMMZHHMM	2379
719	CCYYMMDDHHMM-CCYYMMDDHHMM	2379
3035	Party function code qualifier	
Code	Name/description	Code list
BY	Buyer	3035
EQ	Empty container responsible party	3035
MR	Message recipient	3035
MS	Document/message issuer/sender	3035
SE	Seller	3035
SF	Ship from	3035
ST	Ship to	3035
3055	Code list responsible agency code	
Code	Name/description	Code list
5	ISO (International Organization for Standardization)	3055
O91	Assigned by the provider of the empty packaging	3055
O92	Assigned by the receiver of the empty packaging	3055
10	ODETTE	3055
16	US, D&B (Dun & Bradstreet Corporation)	3055
3139	Contact function code	
Code	Name/description	Code list
IC	Information contact	3139
3155	Communication means type code	
Code	Name/description	Code list
EM	Electronic mail	3155
FX	Telefax	3155
IM	Internal mail	3155
TE	Telephone	3155
3207	Country identifier	
Code	Name/description	Code list
AD	ANDORRA	3207
AE	UNITED ARAB EMIRATES	3207
AF	AFGHANISTAN	3207
AG	ANTIGUA AND BARBUDA	3207
AI	ANGUILLA	3207
AL	ALBANIA	3207
AM	ARMENIA	3207
AN	NETHERLANDS ANTILLES	3207
AO	ANGOLA	3207
AQ	ANTARCTICA	3207
AR	ARGENTINA	3207
AS	AMERICAN SAMOA	3207
AT	AUSTRIA	3207
AU	AUSTRALIA	3207
AW	ARUBA	3207
AX	ÅLAND ISLANDS	3207
AZ	AZERBAIJAN	3207
BA	BOSNIA AND HERZEGOVINA	3207
BB	BARBADOS	3207
BD	BANGLADESH	3207
BE	BELGIUM	3207
BF	BURKINA FASO	3207
	BULGARIA	3207

Applicable codes

Code	Name/description	Code list
BG		
BH	BAHRAIN	3207
BI	BURUNDI	3207
BJ	BENIN	3207
BL	SAINT BARTHÉLEMY	3207
BM	BERMUDA	3207
BN	BRUNEI DARUSSALAM	3207
BO	BOLIVIA (PLURINATIONAL STATE OF)	3207
BQ	BONAIRE, SINT EUSTATIUS AND SABA	3207
BR	BRAZIL	3207
BS	BAHAMAS	3207
BT	BHUTAN	3207
BV	BOUVET ISLAND	3207
BW	BOTSWANA	3207
BY	BELARUS	3207
BZ	BELIZE	3207
CA	CANADA	3207
CC	COCOS (KEELING) ISLANDS	3207
CD	CONGO, DEMOCRATIC REPUBLIC OF	3207
CF	CENTRAL AFRICAN REPUBLIC	3207
CG	CONGO	3207
CH	SWITZERLAND	3207
CI	COTE D'IVOIRE	3207
CK	COOK ISLANDS	3207
CL	CHILE	3207
CM	CAMEROON	3207
CN	CHINA	3207
CO	COLOMBIA	3207
CR	COSTA RICA	3207
CS	SERBIA AND MONTENEGRO	3207
CU	CUBA	3207
CV	CAPE VERDE	3207
CW	CURAÇAO	3207
CX	CHRISTMAS ISLAND	3207
CY	CYPRUS	3207
CZ	CZECHIA	3207
DE	GERMANY	3207
DJ	DJIBOUTI	3207
DK	DENMARK	3207
DM	DOMINICA	3207
DO	DOMINICAN REPUBLIC	3207
DZ	ALGERIA	3207
EC	ECUADOR	3207
EE	ESTONIA	3207
EG	EGYPT	3207
EH	WESTERN SAHARA	3207
ER	ERITREA	3207
ES	SPAIN	3207
ET	ETHIOPIA	3207
FI	FINLAND	3207
FJ	FIJI	3207
FK	FALKLAND ISLANDS (MALVINAS)	3207
FM	MICRONESIA (FEDERATED STATES OF)	3207
FO	FAROE ISLANDS	3207
FR	FRANCE	3207

Applicable codes

Code	Name/description	Code list
GA	GABON	3207
GB	UNITED KINGDOM OF GREAT BRITAIN AND NORTHERN IRELAND	3207
GD	GRENADA	3207
GE	GEORGIA	3207
GF	FRENCH GUIANA	3207
GG	GUERNSEY	3207
GH	GHANA	3207
GI	GIBRALTAR	3207
GL	GREENLAND	3207
GM	GAMBIA	3207
GN	GUINEA	3207
GP	GUADELOUPE	3207
GQ	EQUATORIAL GUINEA	3207
GR	GREECE	3207
GS	SOUTH GEORGIA AND THE SOUTH SANDWICH ISLANDS	3207
GT	GUATEMALA	3207
GU	GUAM	3207
GW	GUINEA-BISSAU	3207
GY	GUYANA	3207
HK	HONG KONG	3207
HM	HEARD ISLAND AND MCDONALD ISLANDS	3207
HN	HONDURAS	3207
HR	CROATIA	3207
HT	HAITI	3207
HU	HUNGARY	3207
ID	INDONESIA	3207
IE	IRELAND	3207
IL	ISRAEL	3207
IM	ISLE OF MAN	3207
IN	INDIA	3207
IO	BRITISH INDIAN OCEAN TERRITORY	3207
IQ	IRAQ	3207
IR	IRAN (ISLAMIC REPUBLIC OF)	3207
IS	ICELAND	3207
IT	ITALY	3207
JE	JERSEY	3207
JM	JAMAICA	3207
JO	JORDAN	3207
JP	JAPAN	3207
KE	KENYA	3207
KG	KYRGYZSTAN	3207
KH	CAMBODIA	3207
KI	KIRIBATI	3207
KM	COMOROS	3207
KN	SAINT KITTS AND NEVIS	3207
KP	KOREA (DEMOCRATIC PEOPLE'S REPUBLIC OF)	3207
KR	KOREA, REPUBLIC OF	3207
KW	KUWAIT	3207
KY	CAYMAN ISLANDS	3207
KZ	KAZAKHSTAN	3207
LA	LAO PEOPLE'S DEMOCRATIC REPUBLIC	3207
LB	LEBANON	3207
LC	SAINT LUCIA	3207
LI	LIECHTENSTEIN	3207
LK	SRI LANKA	3207

Applicable codes

Code	Name/description	Code list
LR	LIBERIA	3207
LS	LESOTHO	3207
LT	LITHUANIA	3207
LU	LUXEMBOURG	3207
LV	LATVIA	3207
LY	LIBYA	3207
MA	MOROCCO	3207
MC	MONACO	3207
MD	MOLDOVA, REPUBLIC OF	3207
ME	MONTENEGRO	3207
MF	SAINT MARTIN (FRENCH PART)	3207
MG	MADAGASCAR	3207
MH	MARSHALL ISLANDS	3207
MK	MACEDONIA, THE FORMER YUGOSLAV REPUBLIC OF	3207
ML	MALI	3207
MM	MYANMAR	3207
MN	MONGOLIA	3207
MO	MACAO	3207
MP	NORTHERN MARIANA ISLANDS	3207
MQ	MARTINIQUE	3207
MR	MAURITANIA	3207
MS	MONTserrat	3207
MT	MALTA	3207
MU	MAURITIUS	3207
MV	MALDIVES	3207
MW	MALAWI	3207
MX	MEXICO	3207
MY	MALAYSIA	3207
MZ	MOZAMBIQUE	3207
NA	NAMIBIA	3207
NC	NEW CALEDONIA	3207
NE	NIGER	3207
NF	NORFOLK ISLAND	3207
NG	NIGERIA	3207
NI	NICARAGUA	3207
NL	NETHERLANDS	3207
NO	NORWAY	3207
NP	NEPAL	3207
NR	NAURU	3207
NU	NIUE	3207
NZ	NEW ZEALAND	3207
OM	OMAN	3207
PA	PANAMA	3207
PE	PERU	3207
PF	FRENCH POLYNESIA	3207
PG	PAPUA NEW GUINEA	3207
PH	PHILIPPINES	3207
PK	PAKISTAN	3207
PL	POLAND	3207
PM	SAINT PIERRE AND MIQUELON	3207
PN	PITCAIRN	3207
PR	PUERTO RICO	3207
PS	PALESTINE, STATE OF	3207
PT	PORTUGAL	3207
PW	PALAU	3207

Applicable codes

Code	Name/description	Code list
PY	PARAGUAY	3207
QA	QATAR	3207
RE	REUNION	3207
RO	ROMANIA	3207
RS	SERBIA	3207
RU	RUSSIAN FEDERATION	3207
RW	RWANDA	3207
SA	SAUDI ARABIA	3207
SB	SOLOMON ISLANDS	3207
SC	SEYCHELLES	3207
SD	SUDAN	3207
SE	SWEDEN	3207
SG	SINGAPORE	3207
SH	SAINT HELENA, ASCENSION AND TRISTAN DA CUNHA	3207
SI	SLOVENIA	3207
SJ	SVALBARD AND JAN MAYEN	3207
SK	SLOVAKIA	3207
SL	SIERRA LEONE	3207
SM	SAN MARINO	3207
SN	SENEGAL	3207
SO	SOMALIA	3207
SR	SURINAME	3207
SS	SOUTH SUDAN	3207
ST	SAO TOME AND PRINCIPE	3207
SV	EL SALVADOR	3207
SX	SINT MAARTEN (DUTCH PART)	3207
SY	SYRIAN ARAB REPUBLIC	3207
SZ	SWAZILAND	3207
TC	TURKS AND CAICOS ISLANDS	3207
TD	CHAD	3207
TF	FRENCH SOUTHERN TERRITORIES	3207
TG	TOGO	3207
TH	THAILAND	3207
TJ	TAJIKISTAN	3207
TK	TOKELAU	3207
TL	TIMOR-LESTE	3207
TM	TURKMENISTAN	3207
TN	TUNISIA	3207
TO	TONGA	3207
TR	TURKEY	3207
TT	TRINIDAD AND TOBAGO	3207
TV	TUVALU	3207
TW	TAIWAN, PROVINCE OF CHINA	3207
TZ	TANZANIA, UNITED REPUBLIC OF	3207
UA	UKRAINE	3207
UG	UGANDA	3207
UM	UNITED STATES MINOR OUTLYING ISLANDS	3207
US	UNITED STATES OF AMERICA	3207
UY	URUGUAY	3207
UZ	UZBEKISTAN	3207
VA	HOLY SEE	3207
VC	SAINT VINCENT AND THE GRENADINES	3207
VE	VENEZUELA (BOLIVARIAN REPUBLIC OF)	3207
VG	VIRGIN ISLANDS, BRITISH	3207
VI	VIRGIN ISLANDS, U.S.	3207

Applicable codes

Code	Name/description	Code list
VN	VIET NAM	3207
VU	VANUATU	3207
WF	WALLIS AND FUTUNA	3207
WS	SAMOA	3207
YE	YEMEN	3207
YT	MAYOTTE	3207
YU	YUGOSLAVIA	3207
ZA	SOUTH AFRICA	3207
ZM	ZAMBIA	3207
ZW	ZIMBABWE	3207
3227	Location function code qualifier	
Code	Name/description	Code list
9	Place of loading	3227
11	Place of discharge	3227
4347	Product identifier code qualifier	
Code	Name/description	Code list
1	Additional identification	4347
6063	Quantity type code qualifier	
Code	Name/description	Code list
21	Ordered quantity	6063
6411	Measurement unit code	
Code	Name/description	Code list
C62	one	6411
7077	Description format code	
Code	Name/description	Code list
S	Structured (from industry code list)	7077
7081	Package Folded Indicator	
Code	Name/description	Code list
FO	Empty container, folded	ODDC154(1)
7143	Item type identification code	
Code	Name/description	Code list
AA	Product version number	ODDC101(1)
AB	Assembly	ODDC101(1)
AC	HIBC (Health Industry Bar Code)	ODDC101(1)
AM	UPC (Universal Product Code)/EAN (European article number) Shipping container code (1-2-5-5-1)	ODDC101(1)
BH	Part number	ODDC101(1)
BL	Control number	ODDC101(1)
BO	Buyer's colour	ODDC101(1)
BP	Buyer's part number	ODDC101(1)
CC	Industry commodity code	ODDC101(1)
CG	Commodity grouping	ODDC101(1)
CL	Colour number	ODDC101(1)
CR	Contract number	ODDC101(1)
CV	Customs article number	ODDC101(1)
DR	Drawing revision number	ODDC101(1)
DW	Drawing	ODDC101(1)
EC	Engineering change level	ODDC101(1)
EF	Material code	ODDC101(1)
EN	International Article Numbering Association (EAN)	ODDC101(1)
GS	General specification number	ODDC101(1)

Applicable codes

Code	Name/description	Code list
HS	Harmonised system	ODDC101(1)
IB	ISBN (International Standard Book Number)	ODDC101(1)
IN	Buyer's item number	ODDC101(1)
IS	ISSN (International Standard Serial Number)	ODDC101(1)
IT	Buyer's style number	ODDC101(1)
IZ	Buyer's size code	ODDC101(1)
MA	Machine number	ODDC101(1)
MF	Manufacturer's (producer's) article number	ODDC101(1)
MN	Model number	ODDC101(1)
MP	Product/service identification number	ODDC101(1)
NB	Batch number	ODDC101(1)
O91	Assigned by the provider of the empty packaging	ODDC101(1)
O92	Assigned by the receiver of the empty packaging	ODDC101(1)
ON	Customer order number	ODDC101(1)
PD	Part number description	ODDC101(1)
PL	Purchaser's order line number	ODDC101(1)
PO	Purchase order number	ODDC101(1)
PV	Promotional variant number	ODDC101(1)
QS	Buyer's qualifier for size	ODDC101(1)
RC	Returnable container number	ODDC101(1)
RN	Release number	ODDC101(1)
RU	Run number	ODDC101(1)
RY	Record keeping of model year	ODDC101(1)
SA	Supplier's article number	ODDC101(1)
SG	Standard group of products (mixed assortment)	ODDC101(1)
SK	SKU (Stock keeping unit)	ODDC101(1)
SN	Serial number	ODDC101(1)
SRS	RSK number	ODDC101(1)
SS	Supplier's supplier article number	ODDC101(1)
ST	Style number	ODDC101(1)
TG	Transport group number	ODDC101(1)
UA	Ultimate customer's article number	ODDC101(1)
V11	Model type / Modelgroup	ODDC101(1)
V12	Model version	ODDC101(1)
VN	Vendor item number	ODDC101(1)
VP	Vendor's (seller's) part number	ODDC101(1)
VS	Vendor's supplemental item number	ODDC101(1)
VX	Vendor specification number	ODDC101(1)
X1	GALIA France Package Type Code	ODDC101(1)
X2	VDA Germany Package Type Code	ODDC101(1)
X3	Other third party Package Type Code	ODDC101(1)
X4	REESS - code (battery or battery component identification) according to Chinese requirements	ODDC101(1)
ZZZ	Mutually defined	ODDC101(1)
AA	Product version number	7143
AB	Assembly	7143
AC	HIBC (Health Industry Bar Code)	7143
AD	Cold roll number	7143
AE	Hot roll number	7143
AF	Slab number	7143
AG	Software revision number	7143
AH	UPC (Universal Product Code) Consumer package code (1-5-5)	7143
AI	UPC (Universal Product Code) Consumer package code (1-5-5- 1)	7143
AJ	Sample number	7143
AK	Pack number	7143

Applicable codes

Code	Name/description	Code list
AL	UPC (Universal Product Code) Shipping container code (1-2- 5-5)	7143
AM	UPC (Universal Product Code)/EAN (European article number) Shipping container code (1-2-5-5-1)	7143
AN	UPC (Universal Product Code) suffix	7143
AO	State label code	7143
AP	Heat number	7143
AQ	Coupon number	7143
AR	Resource number	7143
AS	Work task number	7143
AT	Price look up number	7143
AU	NSN (North Atlantic Treaty Organization Stock Number)	7143
AV	Refined product code	7143
AW	Exhibit	7143
AX	End item	7143
AY	Federal supply classification	7143
AZ	Engineering data list	7143
BA	Milestone event number	7143
BB	Lot number	7143
BC	National drug code 4-4-2 format	7143
BD	National drug code 5-3-2 format	7143
BE	National drug code 5-4-1 format	7143
BF	National drug code 5-4-2 format	7143
BG	National drug code	7143
BH	Part number	7143
BI	Local Stock Number (LSN)	7143
BJ	Next higher assembly number	7143
BK	Data category	7143
BL	Control number	7143
BM	Special material identification code	7143
BN	Locally assigned control number	7143
BO	Buyer's colour	7143
BP	Buyer's part number	7143
BQ	Variable measure product code	7143
BR	Financial phase	7143
BS	Contract breakdown	7143
BT	Technical phase	7143
BU	Dye lot number	7143
BV	Daily statement of activities	7143
BW	Periodical statement of activities within a bilaterally agreed time period	7143
BX	Calendar week statement of activities	7143
BY	Calendar month statement of activities	7143
BZ	Original equipment number	7143
CC	Industry commodity code	7143
CG	Commodity grouping	7143
CL	Colour number	7143
CR	Contract number	7143
CV	Customs article number	7143
DR	Drawing revision number	7143
DW	Drawing	7143
EC	Engineering change level	7143
EF	Material code	7143
EN	International Article Numbering Association (EAN)	7143
FS	Fish species	7143
GB	Buyer's internal product group code	7143
GN	National product group code	7143

Applicable codes

Code	Name/description	Code list
GS	General specification number	7143
HS	Harmonised system	7143
IB	ISBN (International Standard Book Number)	7143
IN	Buyer's item number	7143
IS	ISSN (International Standard Serial Number)	7143
IT	Buyer's style number	7143
IZ	Buyer's size code	7143
MA	Machine number	7143
MF	Manufacturer's (producer's) article number	7143
MN	Model number	7143
MP	Product/service identification number	7143
NB	Batch number	7143
ON	Customer order number	7143
PD	Part number description	7143
PL	Purchaser's order line number	7143
PO	Purchase order number	7143
PV	Promotional variant number	7143
QS	Buyer's qualifier for size	7143
RC	Returnable container number	7143
RN	Release number	7143
RU	Run number	7143
RY	Record keeping of model year	7143
SA	Supplier's article number	7143
SG	Standard group of products (mixed assortment)	7143
SK	SKU (Stock keeping unit)	7143
SN	Serial number	7143
SRS	RSK number	7143
SRT	IFLS (Institut Francais du Libre Service) 5 digit product classification code	7143
SRU	IFLS (Institut Francais du Libre Service) 9 digit product classification code	7143
SRV	GS1 Global Trade Item Number	7143
SRW	EDIS (Energy Data Identification System)	7143
SRX	Slaughter number	7143
SRY	Official animal number	7143
SRZ	Harmonized tariff schedule	7143
SS	Supplier's supplier article number	7143
SSA	46 Level DOT Code	7143
SSB	Airline Tariff 6D	7143
SSC	Title 49 Code of Federal Regulations	7143
SSD	International Civil Aviation Administration code	7143
SSE	Hazardous Materials ID DOT	7143
SSF	Endorsement	7143
SSG	Air Force Regulation 71-4	7143
SSH	Breed	7143
SSI	Chemical Abstract Service (CAS) registry number	7143
SSJ	Engine model designation	7143
SSK	Institutional Meat Purchase Specifications (IMPS) Number	7143
SSL	Price Look-Up code (PLU)	7143
SSM	International Maritime Organization (IMO) Code	7143
SSN	Bureau of Explosives 600-A (rail)	7143
SSO	United Nations Dangerous Goods List	7143
SSP	International Code of Botanical Nomenclature (ICBN)	7143
SSQ	International Code of Zoological Nomenclature (ICZN)	7143
SSR	International Code of Nomenclature for Cultivated Plants (ICNCP)	7143
SSS	Distributor's article identifier	7143
SST	Norwegian Classification system ENVA	7143

Applicable codes

Code	Name/description	Code list
SSU	Supplier assigned classification	7143
SSV	Mexican classification system AMECE	7143
SSW	German classification system CCG	7143
SSX	Finnish classification system EANFIN	7143
SSY	Canadian classification system ICC	7143
SSZ	French classification system IFLS5	7143
ST	Style number	7143
STA	Dutch classification system CBL	7143
STB	Japanese classification system JICFS	7143
STC	European Union dairy subsidy eligibility classification	7143
STD	GS1 Spain classification system	7143
STE	GS1 Poland classification system	7143
STF	Federal Agency on Technical Regulating and Metrology of the Russian Federation	7143
STG	Efficient Consumer Response (ECR) Austria classification system	7143
STH	GS1 Italy classification system	7143
STI	CPV (Common Procurement Vocabulary)	7143
STJ	IFDA (International Foodservice Distributors Association)	7143
STK	AHFS (American Hospital Formulary Service) pharmacologic - therapeutic classification	7143
STL	ATC (Anatomical Therapeutic Chemical) classification system	7143
STM	CLADIMED (Classification des Dispositifs Médicaux)	7143
STN	CMDR (Canadian Medical Device Regulations) classification system	7143
STO	CNDM (Classificazione Nazionale dei Dispositivi Medici)	7143
STP	UK DM&D (Dictionary of Medicines & Devices) standard coding scheme	7143
STQ	eCI@ss	7143
STR	EDMA (European Diagnostic Manufacturers Association) Products Classification	7143
STS	EGAR (European Generic Article Register)	7143
STT	GMDN (Global Medical Devices Nomenclature)	7143
STU	GPI (Generic Product Identifier)	7143
STV	HCPCS (Healthcare Common Procedure Coding System)	7143
STW	ICPS (International Classification for Patient Safety)	7143
STX	MedDRA (Medical Dictionary for Regulatory Activities)	7143
STY	Medical Columbus	7143
STZ	NAPCS (North American Product Classification System)	7143
SUA	NHS (National Health Services) eClass	7143
SUB	US FDA (Food and Drug Administration) Product Code Classification Database	7143
SUC	SNOMED CT (Systematized Nomenclature of Medicine-Clinical Terms)	7143
SUD	UMDNS (Universal Medical Device Nomenclature System)	7143
SUE	GS1 Global Returnable Asset Identifier, non-serialised	7143
SUF	IMEI	7143
SUG	Waste Type (EMSA)	7143
SUH	Ship's store classification type	7143
SUI	Emergency fire code	7143
SUJ	Emergency spillage code	7143
SUK	IMDG packing group	7143
SUL	MARPOL Code IBC	7143
SUM	IMDG subsidiary risk class	7143
TG	Transport group number	7143
TSN	Taxonomic Serial Number	7143
TSO	IMDG main hazard class	7143
TSP	EU Combined Nomenclature	7143
TSQ	Therapeutic classification number	7143
TSR	European Waste Catalogue	7143
TSS	Price grouping code	7143
TSU	EU RoHS Directive	7143
UA	Ultimate customer's article number	7143

Applicable codes

Code	Name/description	Code list
UP	UPC (Universal product code)	7143
VN	Vendor item number	7143
VP	Vendor's (seller's) part number	7143
VS	Vendor's supplemental item number	7143
VX	Vendor specification number	7143
ZZZ	Mutually defined	7143